

Heavy Vehicle Access - LGAQ

Memorandum of Agreement

Improving the Safety and Productivity of
Queensland's Local Road Freight Network

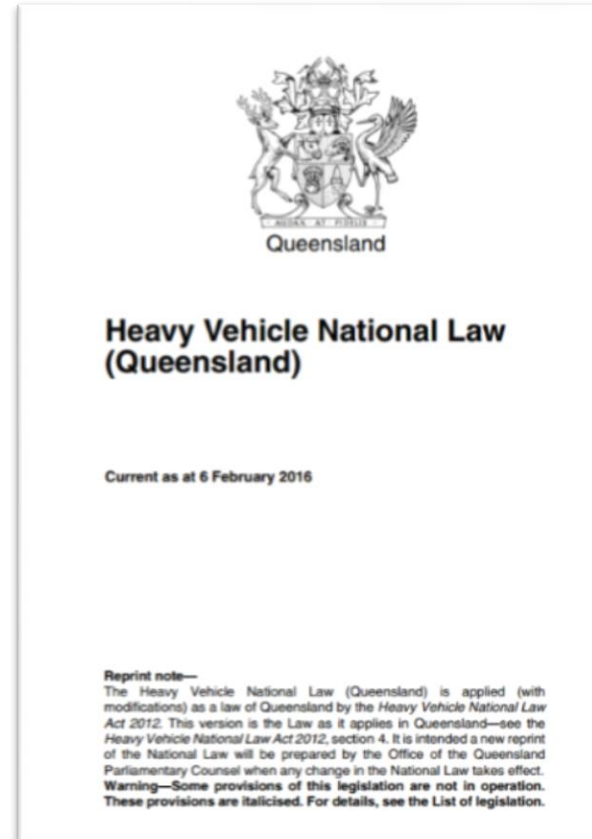
*A joint approach to improving the delivery of heavy vehicle
regulatory services at the local level in Queensland*



Heavy Vehicle National Law (HVNL)

The objective of the law is to facilitate and regulate the use of heavy vehicles on roads in a way that -

- Promotes public safety
- Manages the impact of heavy vehicles on the environment, road infrastructure and public amenity
- Promotes industry productivity and efficiency
- Encourages and promotes innovation and safe business practices



Road Manager Considerations




- Consent
- Consent with conditions
- Propose an alternative route
- Reject with justification

LGAQ Work/Priorities – 2017-18

- Worked with Local Government, NHVR and Industry on access – Example of collaboration with industry -
 - SPV Notice (increased participation from 7 councils in July 2016 to 60 councils in July 2018).
- Training and implementation of Road Manager Module of NHVR Portal.
- Raise awareness on the upcoming National Harmonisation Program (and priority notices).
 - B-double notice completed 72 of 77 councils provided consent.
- Assist councils in understanding their roles under the HVNL.
- Promote notices and pre-approvals where appropriate.
- Prepare councils for OSOM/SPV arrangements (return of delegations).

Special Purpose Vehicle (SPV) Notice




Commonwealth of Australia
Gazette
GOVERNMENT NOTICES

Published by the Commonwealth of Australia

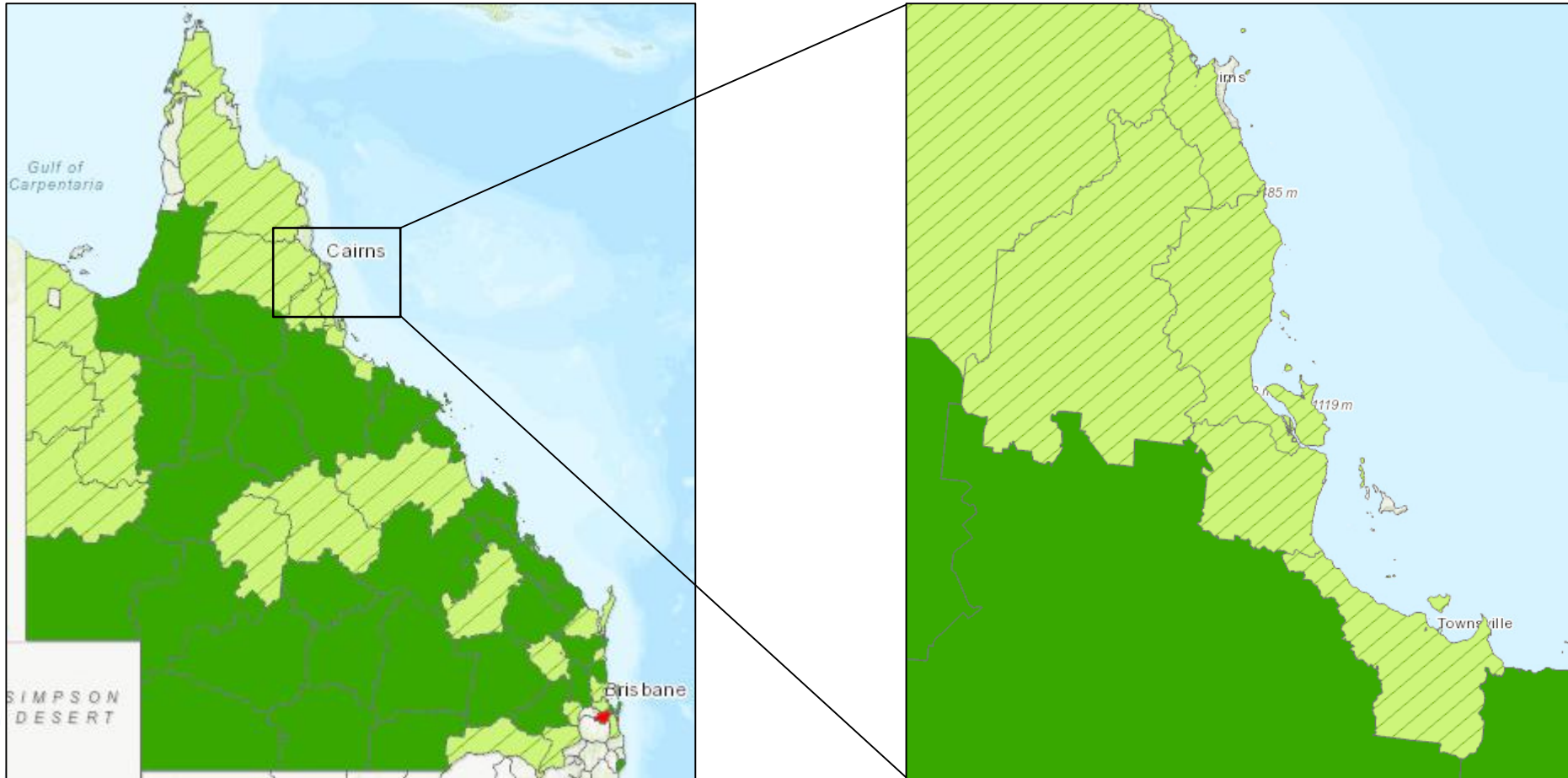
HEAVY VEHICLE NATIONAL LAW

NATIONAL CLASS 1 SPECIAL PURPOSE VEHICLE NOTICE 2016 (No 1)

Class 1 Heavy Vehicle Exemption Notice - Mass and Dimension Exemption

Section	Description	Page
	Introductory Notes	2
Part 1	Preliminary	3
1	Purpose	3
2	Authorising provision	3
3	Title	3
4	Commencement	3
5	Expiry	3
6	Application	3
7	Definitions	3
Part 2	Exemptions from Prescribed Dimension Requirements	6
8	Exemptions and dimension limits	6
9	Rear overhang for mobile concrete pumps	7
Part 3	Exemptions from Prescribed Mass Requirements	9
10	Exemptions	9
11	Total mass limits	9
12	Requirements and exemptions specific to all terrain mobile cranes	10
13	Mass limits for single axles and axle groups	11
14	Tyre mass limits for single axles and each axle in an axle group	13
Part 4	Heavy Vehicle Standards Exemption	15
15	Exemption from compliance with Heavy Vehicle Standards	15
Part 5	General Conditions of Operation	15
16	Warning lights and markings	15
17	Carrying additional equipment	15
18	Operation of state and territory schedules	16
Schedule 1	Australian Capital Territory	17
Schedule 2	New South Wales	19
Schedule 3	Queensland	23
Schedule 4	South Australia	32
Schedule 5	Tasmania	35
Schedule 6	Victoria	37

Special Purpose Vehicle (SPV) Notice



Road Manager Module Training



- From November 2017 – April 2018, the LGAQ facilitated 20 workshops across QLD, which included 58 councils and over 100 council officers.
- In April the NHVR and the LGAQ co-facilitated a webinar to transition across the remaining councils.

Assessment of RAV Routes

What councils need to assess when they receive HV applications:

- Assess the likely infrastructure impacts of the restricted access vehicle on requested routes
- May include technical assessment of bridges, culverts and pavements and geometrical assessments such as swept path, stacking distances and overtaking provisions
- Assessment of non-road infrastructure elements such amenity issues or public consultation processes



Freight/Transport Planning

Key Locations

Key Routes



Types of Access



Notice Access

Provides heavy vehicle with access to a network provided the heavy vehicle meets all requirements (mass, dimensions, conditions and route)



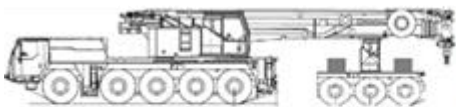
Pre-approval

Pre-approvals allows road managers to consent up to a certain envelope of heavy vehicle to a route/network or area. When the NHVR receives applications, it will check for pre-approvals before sending a consent request



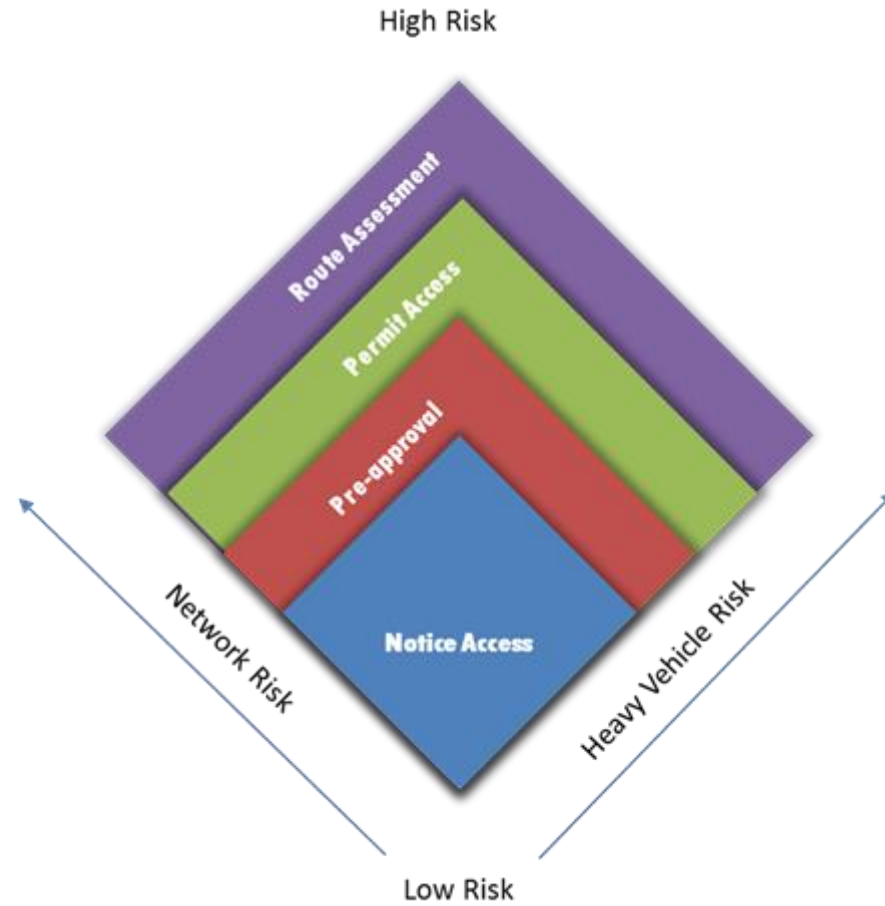
Permit Access

Where a heavy vehicle does not meet the requirements of a notice (or legislation) it requires a permit and consent from all relevant road managers.



Route Assessment

Under the HVNL the road manager has 28 days to respond to a consent request, except where a route assessment is required. Usually this would be applied to high risk heavy vehicles. Or where a network risk/pinch point occurs. The road manager can





Robert Chow
Heavy Vehicle Access Liaison Officer
Local Government Association of Queensland

Robert Chow | Heavy Vehicle Access Liaison Officer
T: 07 3000 2229 M: 0472 813 679