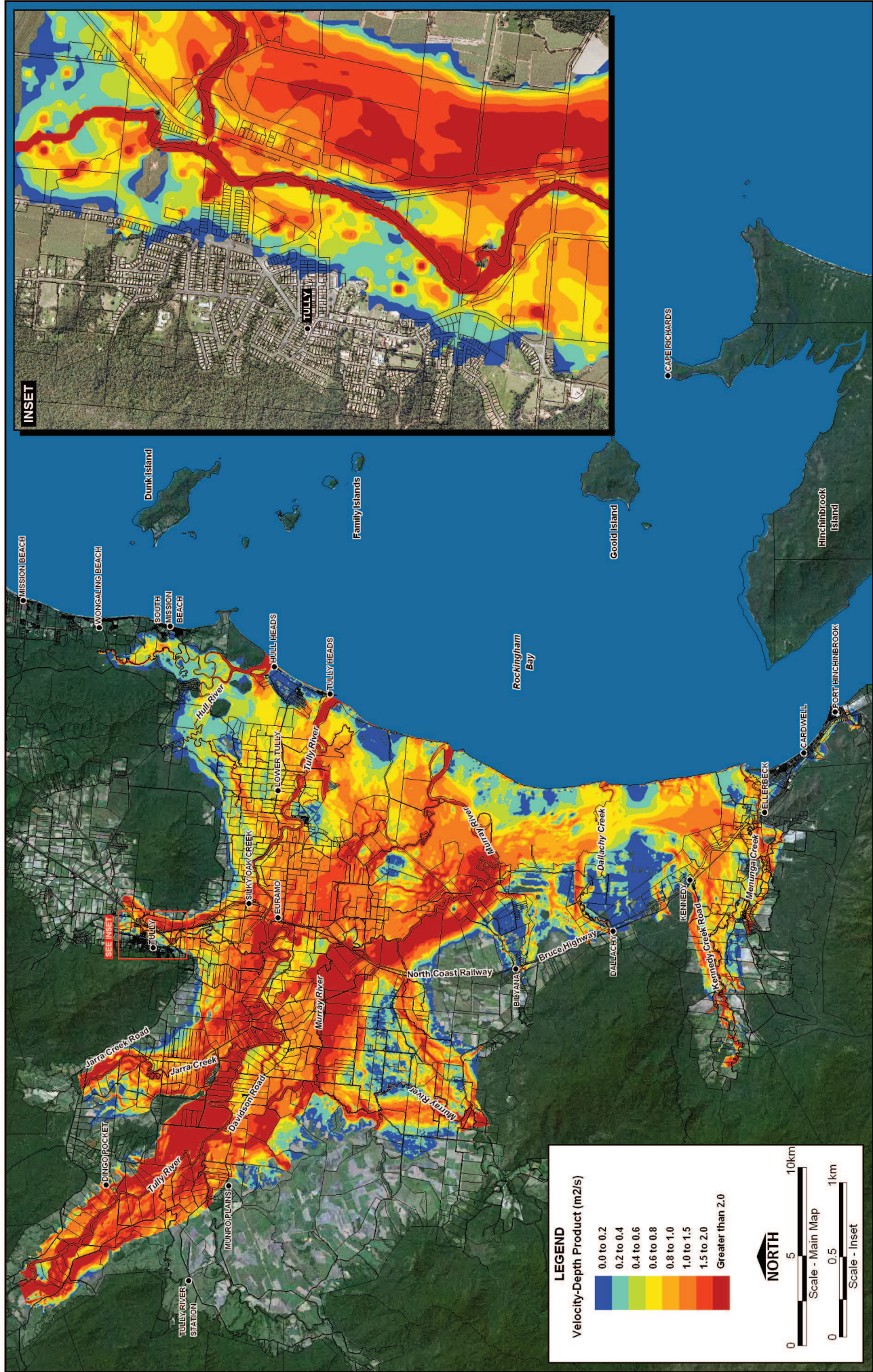


Peak Flood Velocities: Probable Maximum Flood Event

Mapset: BvM  
 K:\615948.k\gr\_caradwell\hydraulics\FLOW\Watershed\KenneyDesign\ken\_00100\_12hr\_DS600\_113.brt  
 K:\615948.k\gr\_caradwell\hydraulics\FLOW\Watershed\Tully\_MurrayDesign\Tul\_Ken\_0100\_72hr\_DS600\_113.brt

I:\615948\_L\BvM\_Caradwell\unstable\BvM\_Grass\_Report\FID\_002\_011009\_PMF\FloodVel.rvt





**LEGEND**

Velocity-Depth Product (m<sup>2</sup>/s)

0.0 to 0.2
0.2 to 0.4
0.4 to 0.6
0.6 to 0.8
0.8 to 1.0
1.0 to 1.5
1.5 to 2.0
Greater than 2.0

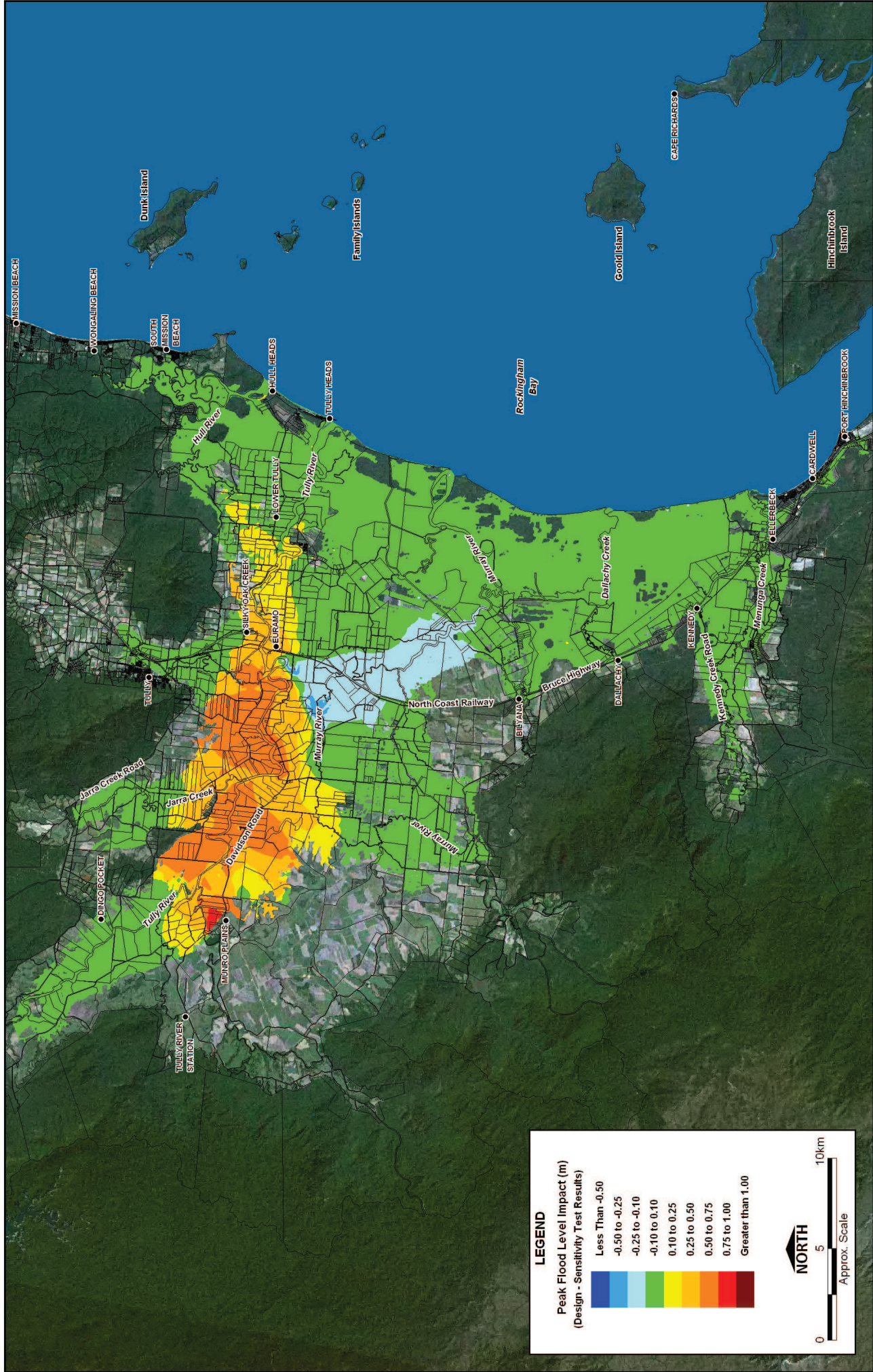
**NORTH**

Scale - Main Map: 0, 5, 10km

Scale - Inset: 0, 0.5, 1km

Model Run:  
 K:\15949.k\gr\_carwellhydraulics\FLOW\Watershed\Design\ken\_00100\_12hr\_D8600\_113.txt  
 K:\15949.k\gr\_carwellhydraulics\FLOW\Watershed\Tully\_Murray\Design\Tul\_Ken\_0100\_72hr\_D8600\_113.txt





**LEGEND**

Peak Flood Level Impact (m)  
(Design - Sensitivity Test Results)

Less Than -0.50
-0.50 to -0.25
-0.25 to -0.10
-0.10 to 0.10
0.10 to 0.25
0.25 to 0.50
0.50 to 0.75
0.75 to 1.00
Greater than 1.00

**NORTH**

0 5 10km

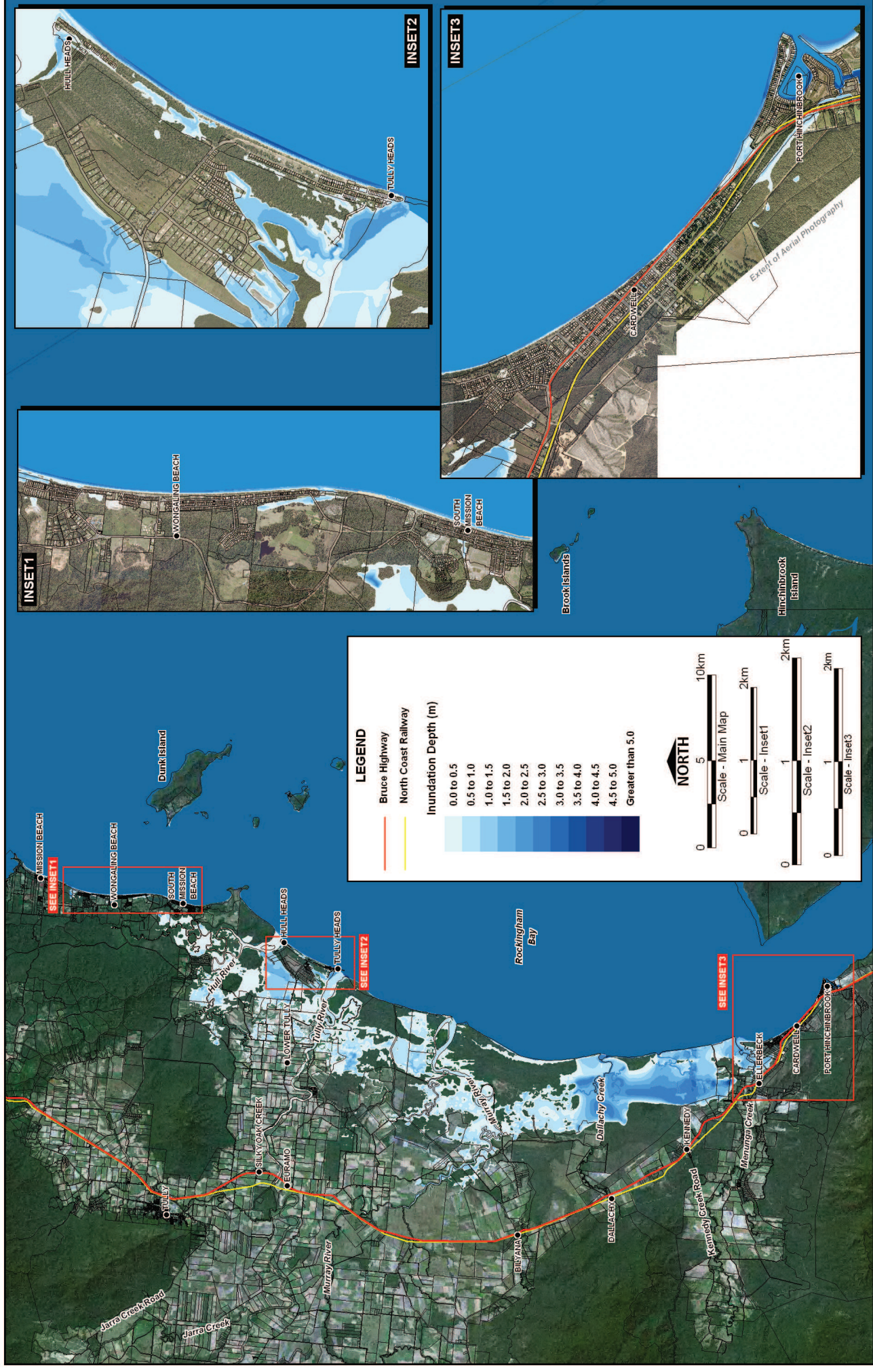
Approx. Scale

Impacts of Changed Mannings n for Area Between Tully and Murray Floodplains

Model Run:  
K:\15948.k\gr\_carwell\hydraulics\TUFlow\Watershed\Design\ken\_00100\_12hr\_D8600\_113.tst  
K:\15948.k\gr\_carwell\hydraulics\TUFlow\Watershed\Tully\_Murray\Design\Tul\_Mer\_0100\_72hr\_D8600\_Bernn\_113.tst

K:\15948\_L1\BRI\_Carwell\unlab\DRG\Draw\_Report\005\_070516\_Report\_1103\SensRoughness.wor



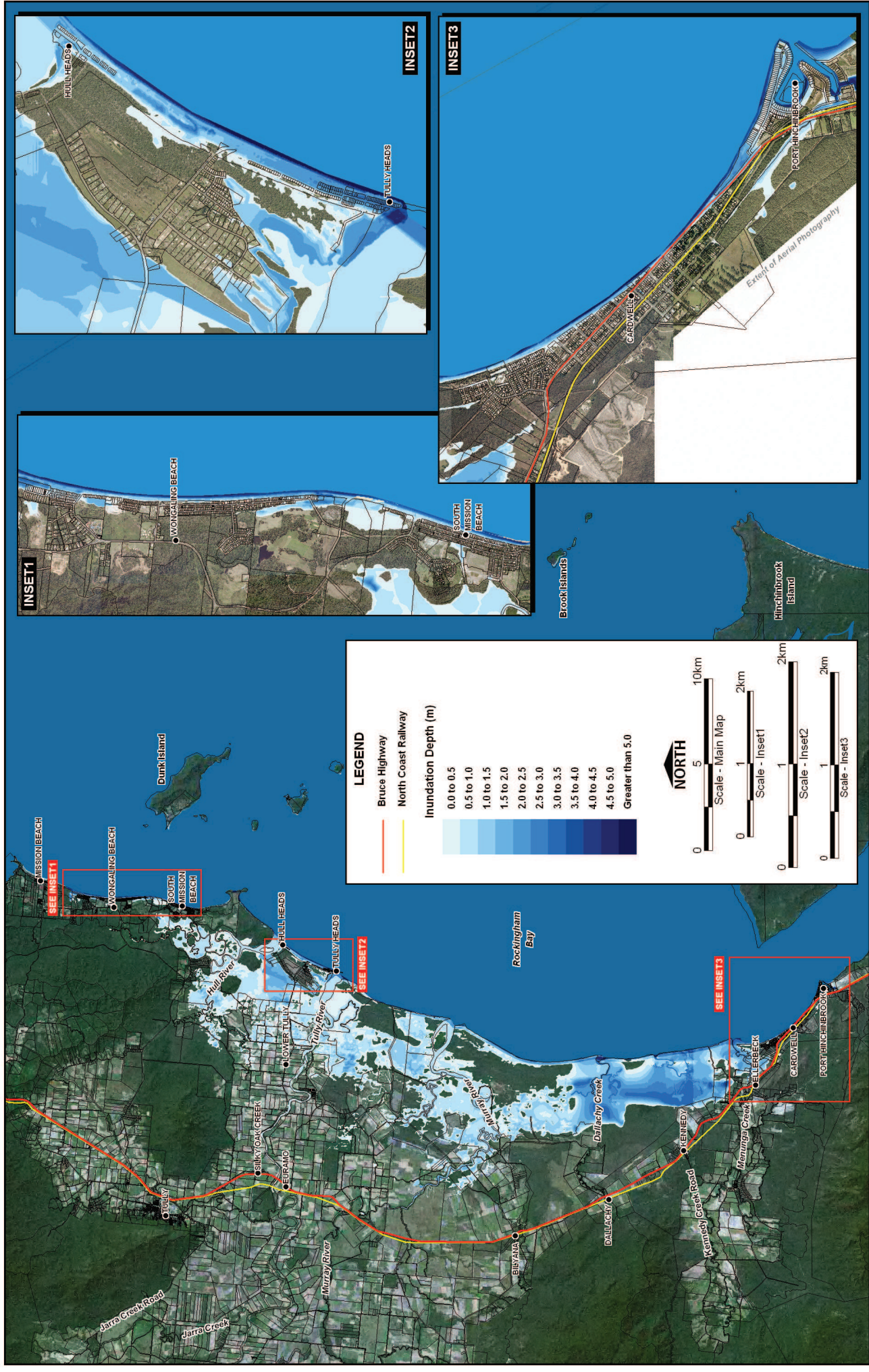


Storm Tide Inundation Excluding Wave Runup Effects: 1% AEP Event

I:\015948\_L\_BRI\_CardwellInundation\BRI\CAS\FINALStorm\_Tide\_Mapping\001\_51.mxd\_incl\_Scale\_incl\_Setup\_incl\_Runup\_px\_GWam\_GPD\_0102.dwg

I:\015948\_L\_BRI\_CardwellInundation\BRI\CAS\FINALStorm\_Tide\_Mapping\001\_51.mxd\_incl\_Scale\_incl\_Setup\_incl\_Runup\_px\_GWam\_GPD\_0102.dwg

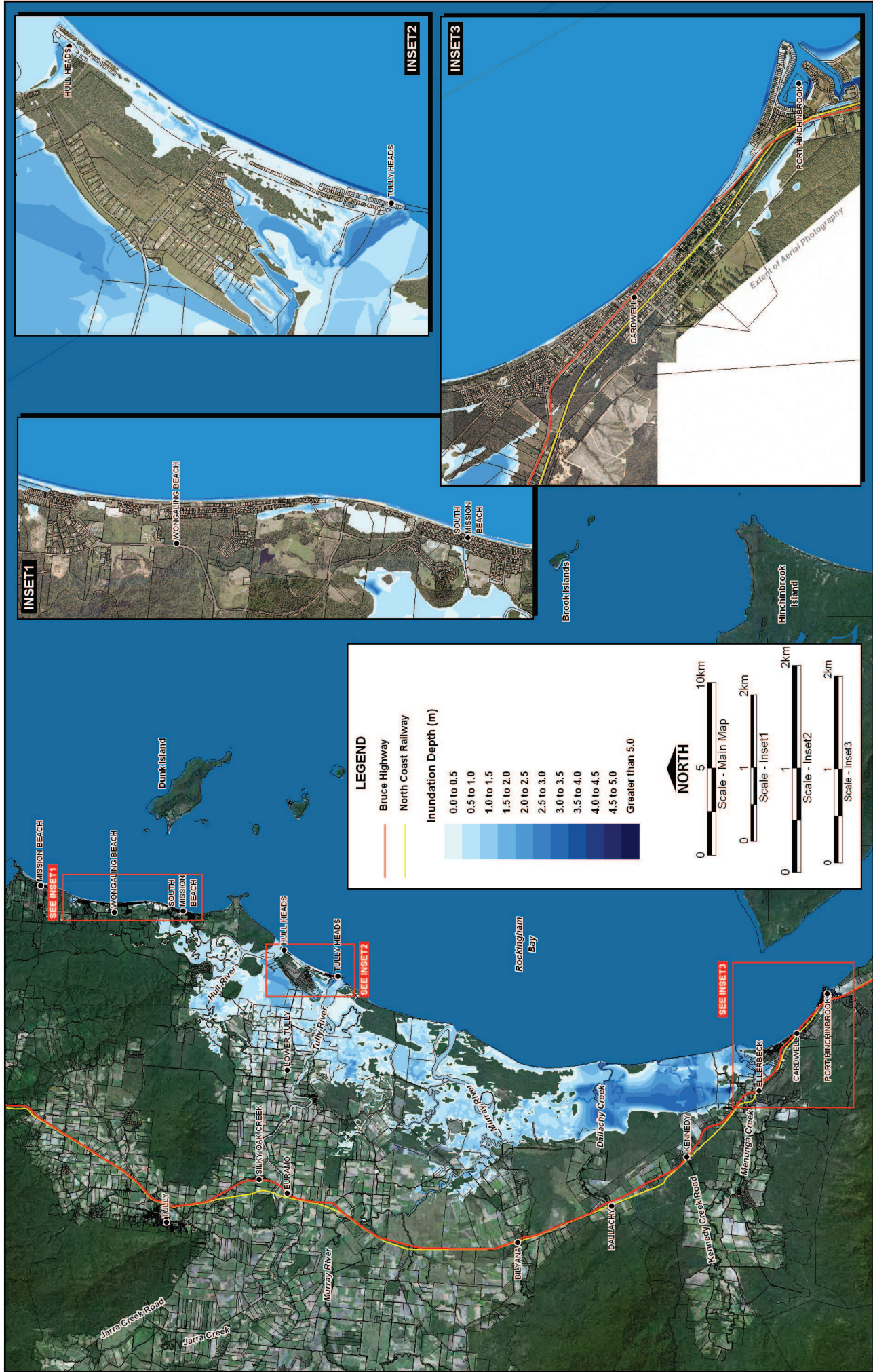




Storm Tide Inundation Including Wave Runup Effects: 1% AEP Event

I:\015940\_L1\_BRI\_L\_CardwellInundation\BRI\COAST\FINAL\Storm\_Tide\_Mapping\001\_S1\map\_inc\_Setup\_inc\_Runup\_inc\_GWam\_L\_GRD\_0\_003.BB



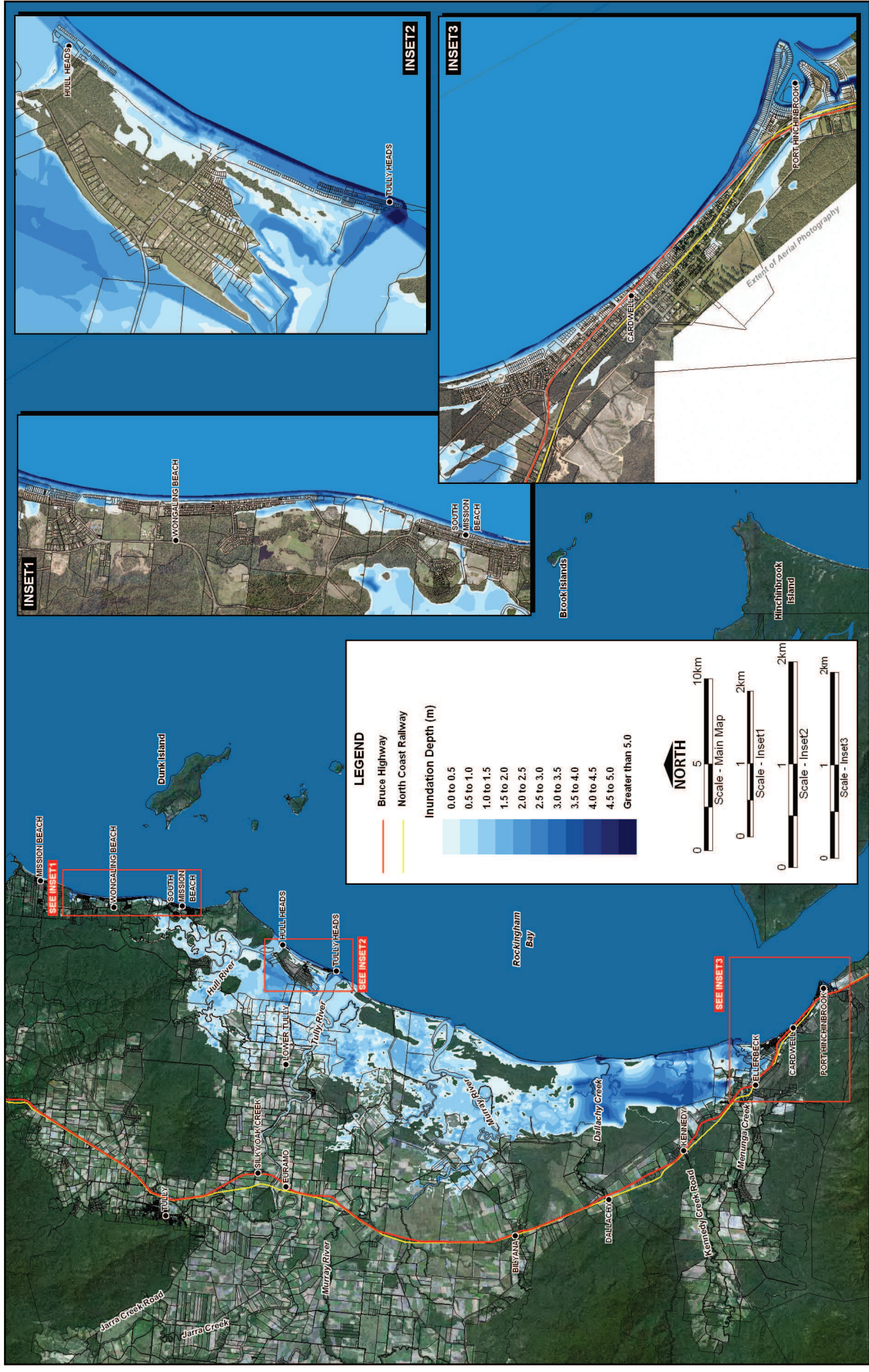


Storm Tide Inundation Excluding Wave Runup Effects: 0.5% AEP Event

I:\015948\_L\_BRI\_CardwellInundation\BRI\CAS\FINAL\Storm\_Tide\_Mapping\0201\_S1\map\_en\_Runup\_Inc\_GW\map\_GPD\_01021.dwg

I:\015948\_L\_BRI\_CardwellInundation\BRI\CAS\FINAL\Storm\_Tide\_Mapping\0201\_S1\map\_en\_Runup\_Inc\_GW\map\_GPD\_01021.dwg



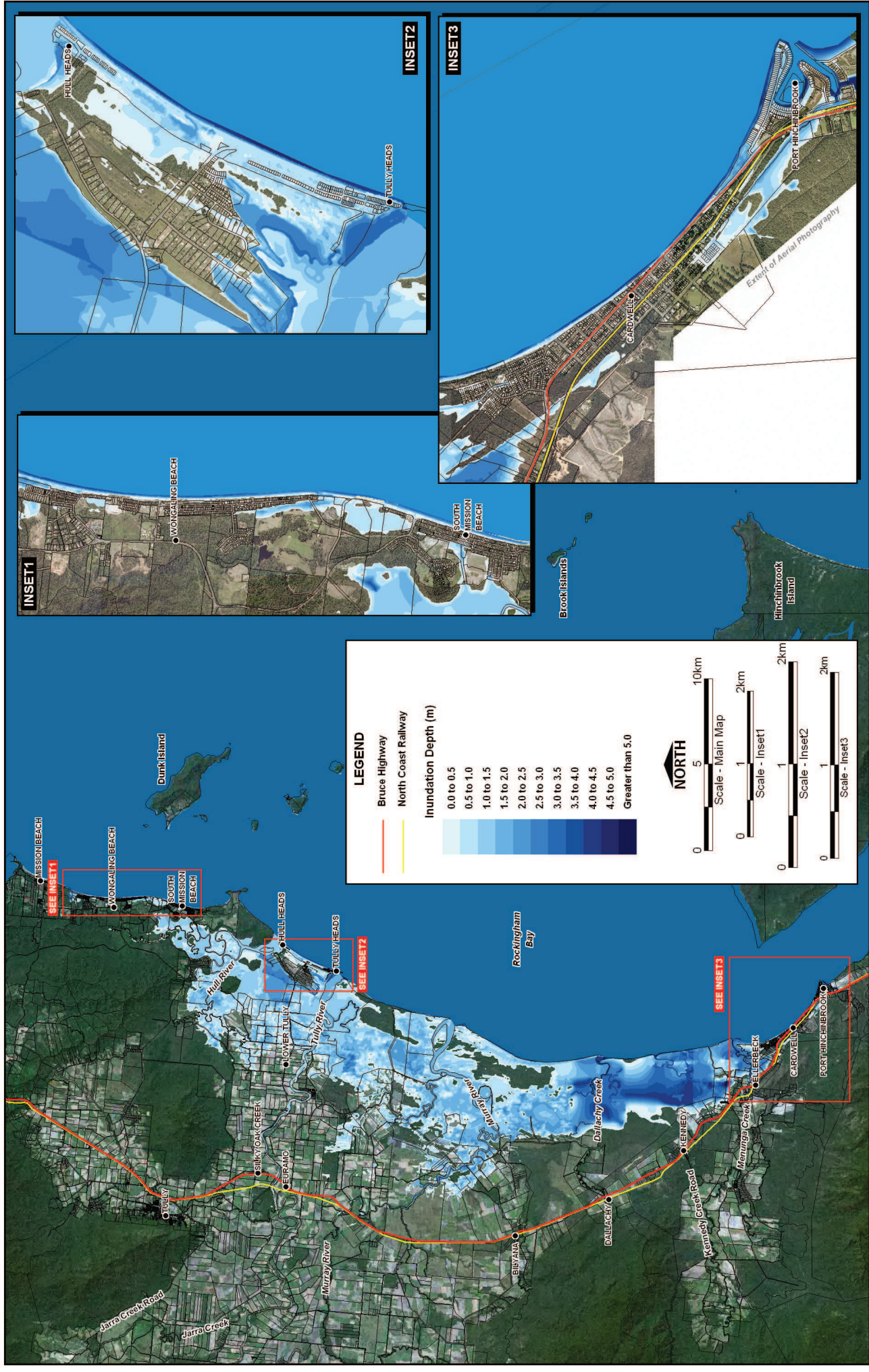


Storm Tide Inundation Including Wave Runup Effects: 0.5% AEP Event

I:\015948\_L1\_BRI\_CardwellInundation\BRI\COAST\FINAL\Storm\_Tide\_Map\Maping\001\_51.mxd Inc Setup Inc Runup Inc GW\Map\_L\_GRD\_0\_003\_15m.mxd

I:\015948\_L1\_BRI\_CardwellInundation\BRI\COAST\FINAL\Storm\_Tide\_Map\Maping\001\_51.mxd Inc Setup Inc Runup Inc GW\Map\_L\_GRD\_0\_003\_15m.mxd

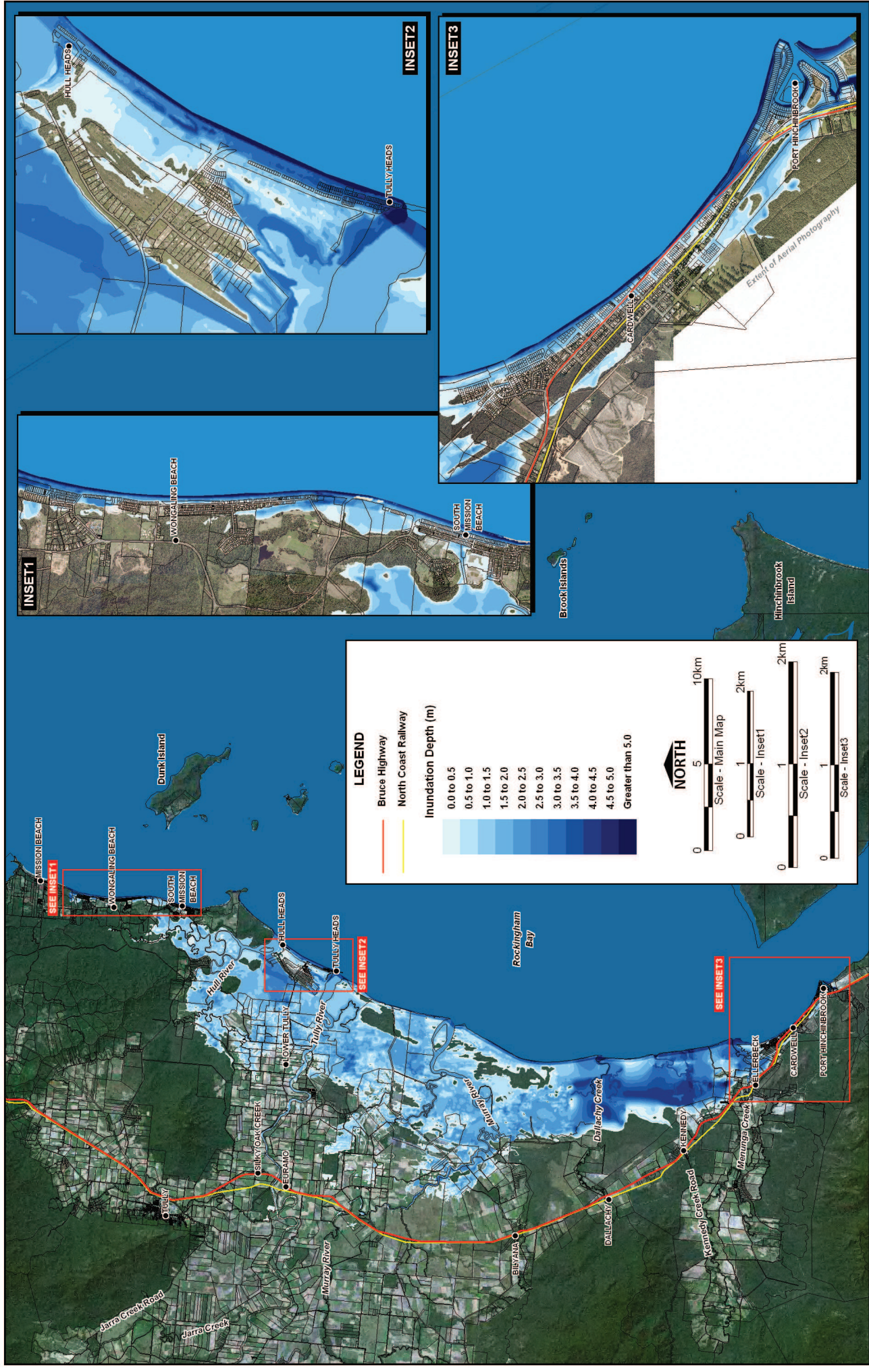




Storm Tide Inundation Excluding Wave Runup Effects: 0.2% AEP Event

I:\015940\_L1\_BRI\_CardwellInundation\BRI\_Coast\FINAL\Storm\_Tide\_Mapping\001\_S1\map\_en\_Runup\_Inc\_GW\map\_GPD\_0102.dwg



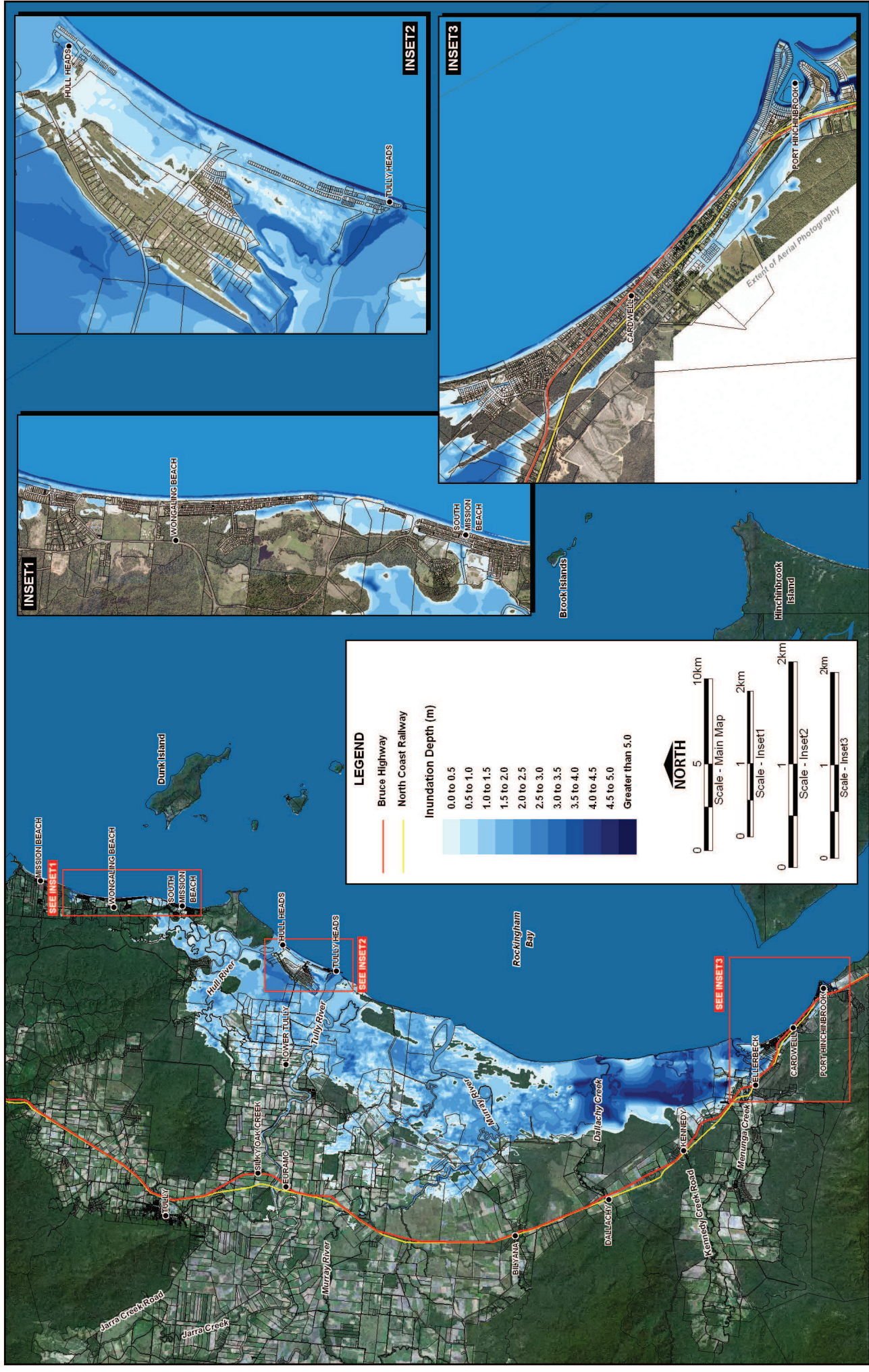


Storm Tide Inundation Including Wave Runup Effects: 0.2% AEP Event

I:\015948\_L\_BRI\_CardwellInundation\BRI\COAST\FINAL\Storm\_Tide\_Mapping\001\_S1Top\_Inc\_Setup\_Inc\_Runup\_Inc\_GWam\_L\_GRD\_0\_003\_15m.tad

I:\015948\_L\_BRI\_CardwellInundation\BRI\COAST\FINAL\Storm\_Tide\_Mapping\001\_S1Top\_Inc\_Setup\_Inc\_Runup\_Inc\_GWam\_L\_GRD\_0\_003\_15m.tad





Storm Tide Inundation Excluding Wave Runup Effects: 0.1% AEP Event

I:\015948\_L1\_BRI\_CardwellInundation\BRI\_CardwellInundation\GIS\FINAL\Storm\_Tide\_Mapping\1000\_S1\_top\_ex\_Runup\_in\_GW\arm\_GHD\_of\_0023a0

I:\015948\_L1\_BRI\_CardwellInundation\BRI\_CardwellInundation\GIS\FINAL\Storm\_Tide\_Mapping\1000\_S1\_top\_ex\_Runup\_in\_GW\arm\_GHD\_of\_0023a0