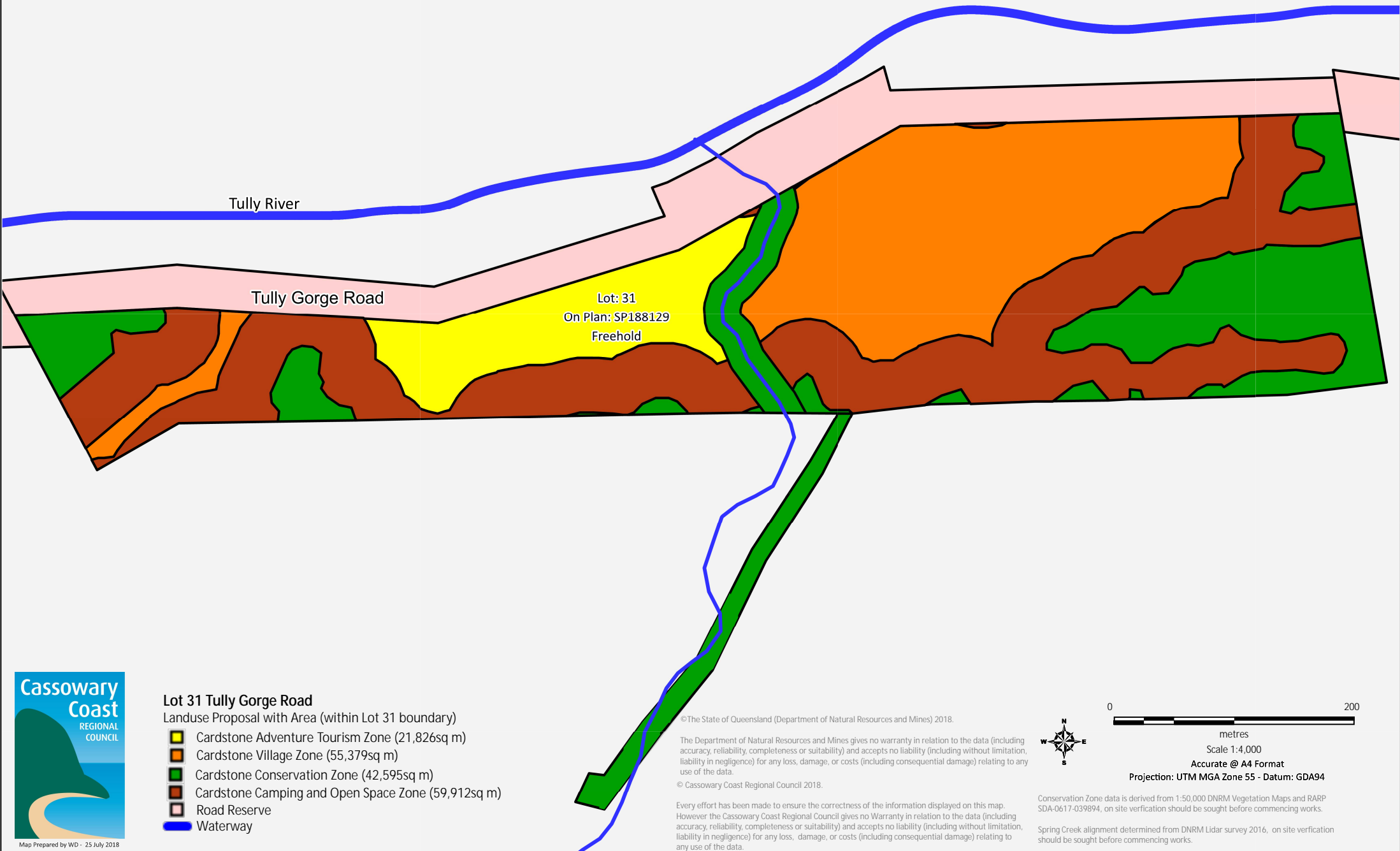


Cardstone Plan of Development Zoning Map



- Lot 31 Tully Gorge Road**
Landuse Proposal with Area (within Lot 31 boundary)
- Cardstone Adventure Tourism Zone (21,826sq m)
 - Cardstone Village Zone (55,379sq m)
 - Cardstone Conservation Zone (42,595sq m)
 - Cardstone Camping and Open Space Zone (59,912sq m)
 - Road Reserve
 - Waterway

©The State of Queensland (Department of Natural Resources and Mines) 2018.
The Department of Natural Resources and Mines gives no warranty in relation to the data (including accuracy, reliability, completeness or suitability) and accepts no liability (including without limitation, liability in negligence) for any loss, damage, or costs (including consequential damage) relating to any use of the data.
© Cassowary Coast Regional Council 2018.

Every effort has been made to ensure the correctness of the information displayed on this map. However the Cassowary Coast Regional Council gives no Warranty in relation to the data (including accuracy, reliability, completeness or suitability) and accepts no liability (including without limitation, liability in negligence) for any loss, damage, or costs (including consequential damage) relating to any use of the data.

0 200

metres

Scale 1:4,000

Accurate @ A4 Format

Projection: UTM MGA Zone 55 - Datum: GDA94

Conservation Zone data is derived from 1:50,000 DNRM Vegetation Maps and RARP SDA-0617-039894, on site verification should be sought before commencing works.

Spring Creek alignment determined from DNRM Lidar survey 2016, on site verification should be sought before commencing works.