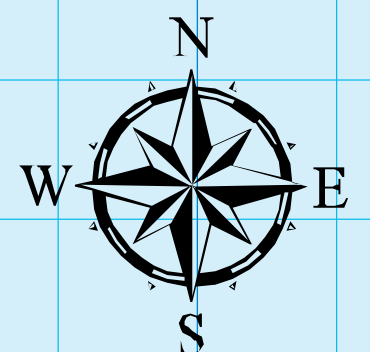


CYCLONE TRACKING MAP



All distances on this map are approximate.



Tune into WARNINGS!

Websites
www.disaster.qld.gov.au
www.bom.gov.au
www.abc.net.au/local

How to use this map:

1. Obtain the latest cyclone advice issued by the Bureau of Meteorology Tropical Cyclone Warning Centre.
2. On a table, record the coordinates (the latitude and longitude in degrees and tenths of degrees) of the position of the cyclone. Note also the advice number, the date and time, the category number, speed and direction of movement of the cyclone and the maximum wind gust.
3. On this map, locate the position of the cyclone centre using the numbered lines of latitude and longitude. Using a white board pen, mark this position and label it with the advice number.
4. As advices continue, join the marks together and track the cyclone's path.

The map's scale may be used to measure the distance of the cyclone from your locality.
Bureau of Meteorology Tropical Cyclone Advice
 QLD - Phone 1300 659 212 NT - Phone 1300 659 211

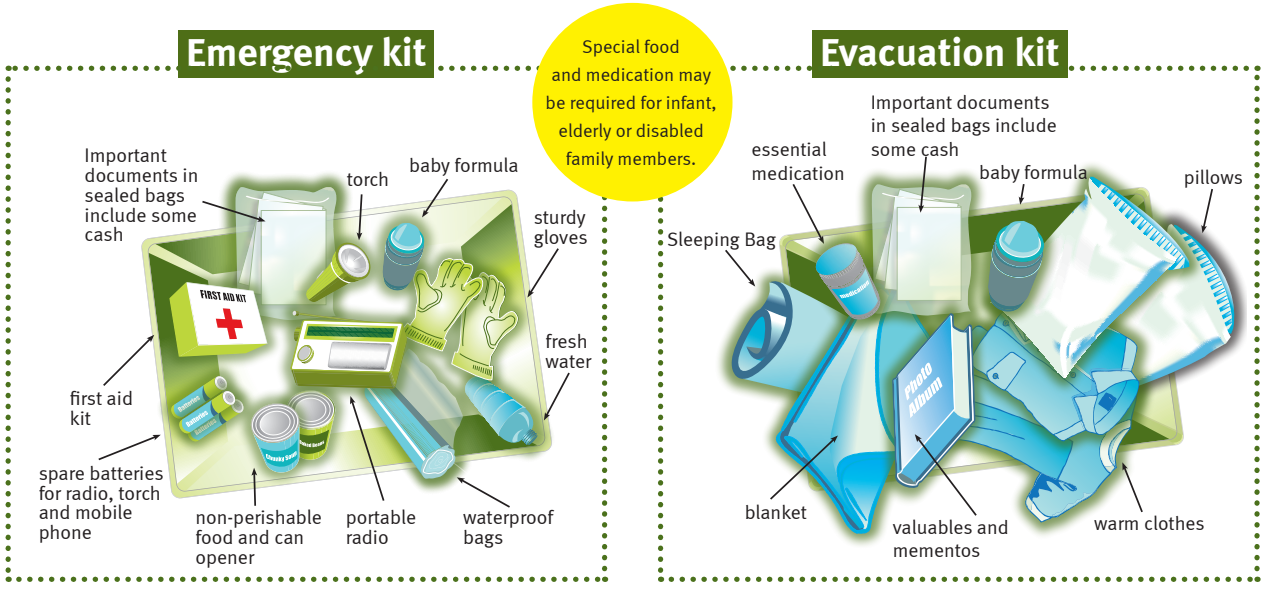
Cyclone advices

Tropical Cyclone Information Bulletins are issued if a tropical cyclone exists within the Queensland region but is not expected to threaten any coastal or island communities within the next 48 hours.
A Cyclone Watch is issued when gales or stronger winds are expected to affect coastal or island communities within 48 hours but not within 24 hours.
Cyclone Warning messages are issued three hourly when gales or stronger winds are expected to affect coastal or island communities within 24 hours. When a cyclone is under radar surveillance and a community is directly threatened, hourly warnings are issued.

What you should do

As a cyclone approaches

- If you hear a cyclone watch or warning you should:
- **Tune in** - to your local ABC radio and TV station
 - **Log on** - to the Bureau of Meteorology website for weather and warnings
 - **Listen out** - for the Standard Emergency Warning Signal, emergency alert messages sent to your telephone and community safety announcements
 - **and ACT!** - Warnings are urgent. Act immediately on the advice provided.
 - Monitor the movement and severity of the cyclone. Track the movement on this map.
 - Check that your emergency kit is complete and easily accessible (see diagram below)
 - Check that your neighbours are aware that a cyclone watch or warning has been issued
 - Clear your property of all loose items including outdoor furniture, children's toys and gardening equipment
 - Secure any boats and move all vehicles and bicycles under cover
 - Fill buckets and bath with water and ensure you have sufficient water purification tablets to make the water drinkable
 - Prepare an evacuation kit (see diagram below)
 - Secure windows by closing shutters or taping glass in a criss-cross fashion using strong packing tape
 - Bring children and pets indoors and remain inside until further advice is given.



During a cyclone

If a cyclone is approaching and an official evacuation order has not been issued, you may decide to shelter in your home until the cyclone has passed through.

If you decide to shelter at home you should:

- Turn off all electricity, gas and water and unplug all appliances
- Keep your emergency kit close at hand
- Bring family into the strongest part of the house (usually the smallest room)
- Keep listening to the radio for cyclone updates and remain indoors until advised
- If the building begins to break up, immediately seek shelter under a strong table or bench or under a heavy mattress
- **BEWARE THE CALM EYE OF THE CYCLONE.** Do not venture outdoors during the eye of the cyclone. Stay inside until you have received official advice that it is safe to go outside.

If you must evacuate:

- If an official evacuation order is issued then you and your family must leave your home immediately and seek shelter with friends or family who are further inland or on higher ground.
- Turn off all electricity, gas and water, unplug all appliances and lock your doors
 - Ensure all family members are wearing strong shoes and suitable clothing
 - Take your emergency kit and evacuation kit and commence your evacuation to accommodation with family or friends.

After a cyclone

Once you have been advised that the cyclone has passed you should:

- Listen to your radio and remain indoors until advised
- If you are told to return to your home, do so using the recommended routes only
- Do not go sightseeing
- Check on your neighbours if necessary
- Do not use electrical appliances which have been wet until they are checked for safety
- Boil or purify your water until supplies are declared safe
- Stay away from damaged powerlines, fallen trees and flood water
- If your home has become uninhabitable due to cyclone damage, contact your local council to identify where you can seek further assistance.

ABC Local Radio and the Bureau of Meteorology website (www.bom.gov.au) will keep you up to date with the latest information when a cyclone warning is in effect.

 ABC Western Queensland abc.net.au/westqld	 ABC Western Queensland abc.net.au/westqld	 ABC Far North Queensland abc.net.au/farnorth	 ABC Far North Queensland abc.net.au/farnorth	 ABC Southern Queensland abc.net.au/southqld	 ABC Tropical North Queensland abc.net.au/tropic	 ABC North West Queensland abc.net.au/northwest	 ABC Wide Bay Queensland abc.net.au/widebay	 91.7 ABC Coast FM abc.net.au/goldcoast	 ABC Capricornia abc.net.au/capricornia	 630 ABC North Queensland abc.net.au/northqld	 612 ABC Brisbane abc.net.au/brisbane
--	--	--	--	---	---	---	---	---	---	--	--

Also available on local community-operated transmitters:

LONGREACH (540) CHARLEVILLE (603) AM Bedourie 106.1 FM RN 107.7 FM Birdsville 106.1 FM RN 107.7 FM Boulia 106.1 FM RN 107.7 FM Burdakin Falls 107.5 FM Burketown 88.9 FM Camooweal 106.1 FM RN 107.7 FM Collinsville 106.1 FM RN 107.7 FM Croydon 105.9 FM RN 107.5 FM Doomadgee 97.5 FM Georgetown 106.1 FM RN 107.7 FM Goonyella 89.7 FM Gunpowder 106.1 FM RN 107.7 FM	Gununa 92.7 FM (Mornington Island) Injune 105.9 FM RN 107.5 FM Jackson Oil Fields 107.7 FM Karumba 106.1 FM RN 107.7 FM Middlemount 106.1 FM Normanton 105.7 FM RN 107.3 FM Pentland 106.1 FM RN 107.7 FM Quilpie 106.1 FM RN 107.7 FM Red Dome Mine 105.7 FM Tambo 105.9 FM Taroom 106.1 FM Thargomindah 106.1 FM Theodore 105.9 FM Wandooan 98.1 FM RN 98.9 FM	Cairns 106.7 FM Cairns North 95.5 FM Gordonvale/Cairns South 80.1 AM Atherton Tablelands 720 AM/ 106.7 FM Pompueraaw, Hopevale, Lakeland, Kowanyama, Aurukun 102.9 FM Babinda 95.7 FM Dimbulah 91.7 FM Laura 106.1 FM Mission Beach 89.3 FM Mossman 63.9 AM Mt Garnett 95.7 FM Mt Molloy 95.7 FM Torres Strait 106.2 AM Tully 95.5 FM Weipa 104.4 AM	Toowoomba/Dalby/ Kingaroy 747 AM Southern Downs 104.9 FM Roma 105.7 FM St George 71.1 AM Cunnamulla 106.1 FM Ayrton 103.9 FM Mt Surprise 105.3 FM Mission Beach 89.3 FM Scherger 92.1 FM Murray Island 101.3 FM	Mackay 101.1 FM Sarina 101.1 FM Nebo 101.1 FM Pioneer Valley 101.1 FM St Lawrence 101.1 FM Airlie Beach 89.9 FM Dysart 91.7 FM Hamilton Island 101.1 FM Moranbah 104.9 FM	Mt Isa 106.5 FM North West Queensland (Richmond, Cloncurry, Julia Creek, Boulia) 56.7 AM	Mt Goonaman 100.1 FM Miriam Vale 100.1 FM Hervey Bay/Eidsvold 85.5 AM Gympie 156.6 AM	Sunshine Coast 90.3 FM Gold Coast 91.7 FM	Rockhampton 83.7 AM Emerald 154.8 AM Gladstone 99.1 FM Biloela 94.9 FM Alpha 105.7 FM	North Queensland 630 AM	Brisbane 612 AM
--	--	--	--	---	--	--	--	---	----------------------------	-----------------