



Cassowary Coast
REGIONAL COUNCIL

Welcome to the Cassowary Coast

2024-2025 NEW RESIDENT HANDBOOK



Acknowledgement of Country

Cassowary Coast Regional Council acknowledges the Traditional Custodians of the land and sea on which we operate, the Mamu, Djiru, Girramay, Gulngay, Warrgamay, Jirrbal and Bandjin Peoples. We wish to acknowledge our respect for their current and emerging leaders and those in the dreaming. We thank all First Nations people for the contributions they make in building this community.





Contents

ACKNOWLEDGEMENT OF COUNTRY	2
CONTENTS	3
WELCOME	4
MESSAGE FROM THE MAYOR	5
ABOUT THE CASSOWARY COAST REGION	6
COUNCIL SERVICES	7
CONNECTING WITH COUNCIL	8
COMMUNICATING WITH COUNCIL	9
CUSTOMER REQUESTS	16
MEDICAL & EMERGENCY SERVICES	10
TRANSPORT	11
EDUCATION & CHILD CARE	12
AGED CARE SERVICES	15
EVENTS, MARKETS, & CULTURAL ACTIVITIES	17
INFORMATION CENTRES	18
SPORTS & RECREATION	19
SPORTING CLUBS AND GROUPS	20
POOLS, PARKS AND GARDENS	22
FUN IN THE SUN	22
LIBRARIES AND MUSEUMS	23
COUNCIL SERVICES & INFORMATION	24
RESPONSIBLE PET OWNERSHIP	27
DISASTER INFORMATION	28
UNIQUE NATURAL ENVIRONMENT	29
NATURAL HAZARDS	30
COMMUNITY	34
STAY CONNECTED	36

Welcome

Welcome to the Beautiful Cassowary Coast Regional Council, where the area abounds in natural beauty and is home to two World Heritage areas, the Wet Tropics rainforest and the Great Barrier Reef.

Cassowary Coast Regional Council is the local government authority for the region stretching from Innisfail in the north, through Tully and Mission Beach, to Cardwell in the south with stunning coastal villages and hinterland hamlets along the way.

Situated in one of Queensland's most idyllic locations, the Cassowary Coast is well known as one of Australia's best winter destinations and a place of undiscovered playgrounds for thrill seekers and explorers alike.

Our region's key economic drivers are Agribusiness and food production, Transport and Logistics, Aquaculture and Tourism. We are central to beaches and the World Heritage Great Barrier Reef and rainforest, art deco architecture and multiculturalism while boasting some of the world's most pristine waterways, including the Tully River.

Council maintains a strong community and cultural development role in the delivery of local government services, collaborating with and advocating on behalf of Community. Council's strategic plans are built on the pillars of Social, Economic, Environment and Governance.



Image caption: Views of Mission Beach

Message from the Mayor

Welcome to the Cassowary Coast!

As your Mayor, it is my great pleasure to extend a warm welcome to all new residents of the Cassowary Coast region. Our area is renowned for its stunning natural beauty, vibrant communities, and a lifestyle that blends the best of coastal and rural living.

The Cassowary Coast is a place where you can truly enjoy the best of both worlds. From the lush rainforests and pristine beaches to our charming towns and friendly neighborhoods, there is something here for everyone. Whether you are here for work, to raise a family, or to enjoy a relaxed retirement, you will find that our community is welcoming and inclusive.

Our Council is committed to providing high-quality services and fostering a safe, sustainable, and prosperous environment for all residents. This handbook has been designed to help you settle in and make the most of what our region has to offer. Inside, you will find essential information about local services, facilities, and community initiatives that will help you navigate your new home with ease.

We encourage you to get involved in our community, explore the beautiful landscapes, and take advantage of the numerous recreational and cultural opportunities available. The Cassowary Coast is a place where you can build lasting connections and create wonderful memories.

Once again, welcome to our community. We are delighted to have you here and look forward to seeing you thrive in your new home.

Warm regards,

Teresa Millwood
Mayor, Cassowary Coast Regional Council



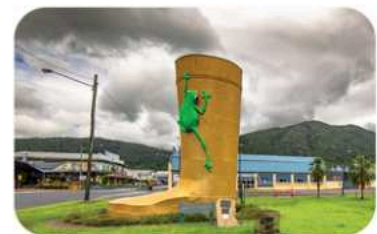
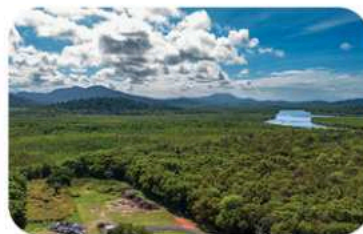
About the Cassowary Coast Region

The Cassowary Coast region is situated between the major regional cities of Cairns (approximately one hour north) and Townsville (approximately two hours south).

The Cassowary Coast is named after the distinctive and endangered flightless bird which inhabits the region, and it covers an area of approximately 4,700 square kilometres.

The region is a mix of town, rural and coastal communities boasting beautiful beaches, lush hinterland and scenic mountains. There are over 3,500 businesses operating in the area, with potential for new business growth and development in all of the towns and communities. The most recognisable industries linked to the region are tourism and primary industries. The Cassowary Coast is Australia's premier banana-growing region and a well-known cane-growing region.

The Cassowary Coast boasts the townships of Innisfail in the north and Tully, Mission Beach and Cardwell in the south. Essential services are readily accessible. The high rainfall and humidity means this is one of the wettest and greenest places in Australia. The estimated resident population is 30,000.



48%
Wet Tropics World Heritage area

3,124mm
Average rainfall



120km
of pristine coastline

4,700km²
of local Government Area

Council Services



1,300
kilometres of road
network maintained



162
bridges maintained



30+
community halls and
facilities



77
kilometres of footpaths



4
libraries across
the region



16
boat ramps managed
and maintained



42,835
tonnes of waste
processed



910
hectares of parks and
reserves



14,000
customer service
requests



2,453
of potholes repaired



79
public amenities



5,638
mega litres of drinking water
supplied

Connecting with Council

Council Office Locations



Tully



Innisfail



Cardwell

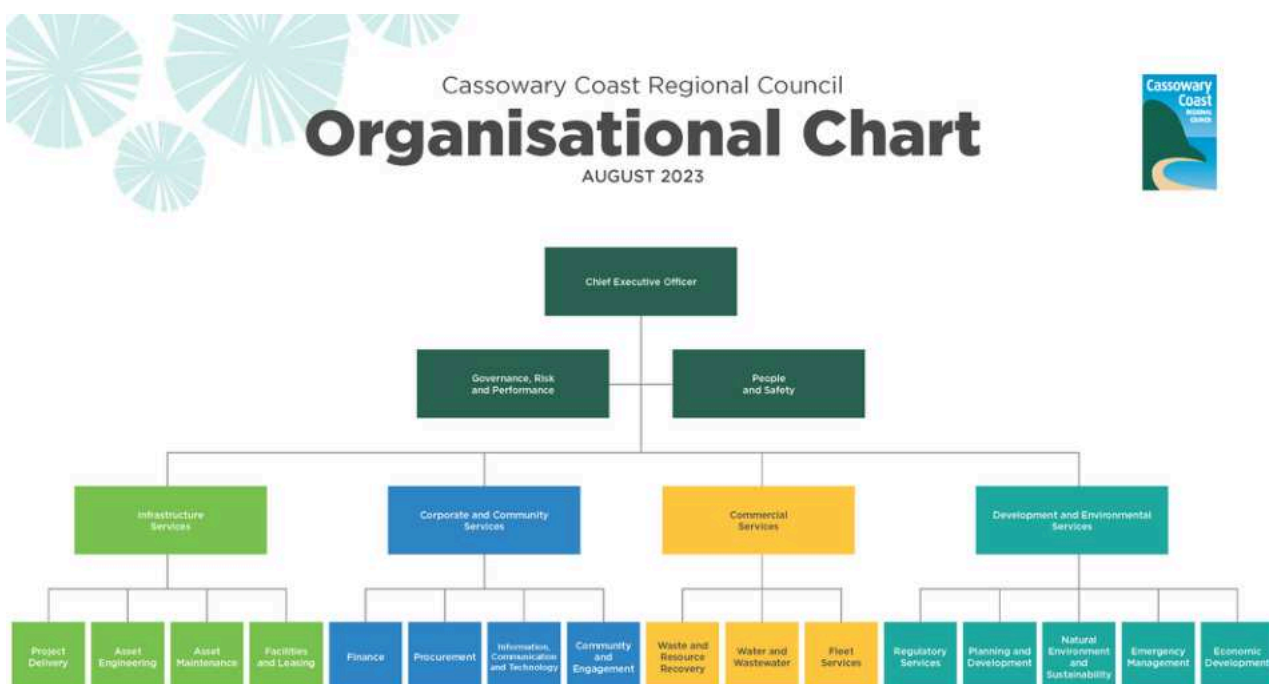
Council Meetings

Ordinary meetings of Council are held on the Fourth Thursday of the month commencing at 9.00 am and the meeting Chambers are at the Tully Civic Centre. Please check the Council website for upcoming meetings and agenda items. Residents and ratepayers are cordially invited to attend Council meetings. To present to council in either a Councillor information session or ordinary meeting, please contact Council in advance.

Subscribe to receive fortnightly e-News

Cassowary Coast Regional Council issues a fortnightly email called 'Community Connect' which all residents are encouraged to subscribe to. By doing so you'll be alerted of events, community grants, consultations, project updates and Council initiatives.

Subscribe to Community Connect at yoursay.cassowarycoast.qld.gov.au/register.



Communicating with Council

Cassowary Coast Regional Council engages with the community to understanding important issues and consider improvements we can make to ensure our residents voices are heard.

We encourage you to work with us to help deliver the best possible outcomes for the community. Having effective communication channels and ways you can provide your say on projects, services and future plans strengthens the link between Council and the community and results in quality decision making.

Council will often open up consultation with the community through information sessions, surveys, Your Say website, and development approval submissions.

Your Divisional Councillor is also available for engagement and communication about your community.

We are a diverse location with many different cultures, background and over 30 different languages spoken.



Image caption: Customer Service Officer

Customer Requests

Our customer service officers will record and action requests for council owned facility and assets and items of concern that are the responsibility of the Council.

What are the three levels of Government responsible for?

Federal Government	State Government	Local Councils
Responsible for issues that affect all Australians (National Issues)	Responsible for issues that affect people in that State or Territory	Responsible for issues that affect local communities
Post, Telephones and the Internet	Public Transport	Rubbish Collection and Recycling
Currency	Schools	Parks, Sports fields and Swimming Pools
Immigration	Hospitals	Pet Control
Defence	Policing	Parking
Medicare	Main Roads	Local Roads, Bridges
Foreign Policy	Housing	Community Development & Local Economy
	Education	



Image caption: Innisfail Shire Hall

Medical & Emergency Services

There are two hospitals in the Cassowary Coast region, Innisfail and Tully with several community and outreach specialists' appointments available at both.

Medical Centres and General Practitioners (GPs) are found locally throughout the Cassowary Coast region, and it is suggested that new residents engage with a GP sooner rather than later as is the case with most regional centres.

There are no 24 Hour clinics in the Cassowary Coast, but if you would like to speak with a health professional, call **13HEALTH (13 43 25 84)** and they will determine if you need to go to the Emergency Department.

ALWAYS CALL 000 when you need IMMEDIATE medical attention, or if someone's life is in danger.

Health Providers - North to South

Innisfail Hospital	87 Rankin Street, Innisfail	07 4016 1411
Innisfail Family Health	65 Edith Street, Innisfail	07 4061 2985
Innisfail Medical Centre	1 Owen Street, Innisfail	07 4061 2322
Rankin Street Medical	55 Rankin Street, Innisfail	07 4061 1286
Dr Di Palma	62 Fitzgerald Esplanade, Innisfail	07 4061 1556
Mamu Health Service	10 Ernest Street, Innisfail	1800 765 966
Tully Medical Centre	10 Watkins Street, Tully	07 4068 1977
Tully Hospital	17 Bryant Street, Tully	07 4068 4144
Mamu Health Service	8 Watkins Street, Tully	07 4068 0000
Cardwell Family Practice	226 Victoria Street, Cardwell	07 4066 8533
Ingham Family Medical Practice - Cardwell	75 Victoria Street, Cardwell	07 4227 2000

Transport

Taxis are available in Innisfail, Mission Beach, and Tully.

Innisfail has a local bus route, and the Mission Link Bus travels from Cardwell to Tully to Mission Beach to Innisfail to Babinda to Cairns on a regular daily schedule.

The Translink Fare and Zones for Innisfail and surrounds can be viewed [here](#).

National bus services stop along the Bruce Highway and Mission Beach, and offer both north and south services, onwards to Cairns, Townsville and Brisbane.

Queensland Rail stops at Innisfail Station on schedule and can be booked for Tully and Cardwell Stations by request.

There are three aerodromes in the Cassowary Coast Region, Mundoo, Tully and Dallachy. These are generally used for commercial purposes, including Sky Divers and agricultural spraying.

Travellers looking to journey to either domestic or international destinations can source flights from either Cairns or Townsville Domestic and International Airports. Further, Cairns now hosts several domestic cruise ships every year, offering both domestic and international cruising options.



Image caption: Road upgrades outside of Innisfail

Education and Childcare

With a wide variety across the region, there are twenty primary schools including six private schools in the Cassowary Coast Region, and three Senior High Schools and various independent alternative educational facilities.

Innisfail also has a Cassowary Coast University Centre (CCUC) situated on Rankin Street behind the Innisfail Library. This is a joint initiative between the Cassowary Coast Regional Council and VPG, and various university and vocational educational providers. Find out more at ccuc.edu.au.

For the most up to date information about Schools in the region, please visit [the Australian Schools Directory](#).



Image caption: Mourilyan State Primary Students Image caption: Tully Grand Stand

Primary State and Private Schools - North to South

Goondi State School	P – 6	Goondi, Innisfail
Innisfail State School	P-6	Innisfail
East Innisfail State School	P -6	Innisfail
Good Counsel Primary Double Stream Catholic Primary School	P-6	Innisfail
Darlingia Forest School - An independent, democratic, primary school focusing on hands-on, outdoor education for active and creative learners.	P-4	Innisfail
Flying Fish Point State School	P – 6	Flying Fish Point, Innisfail
Radiant Life College Non-denominational Independent Christian School	P - 9	Innisfail
Mourilyan State School	P – 6	Mourilyan
Mundoo State School	P – 6	Mundoo
South Johnstone State School	P – 6	South Johnstone
St Rita's Catholic Primary School After School STEM+1 Program Playgroup	P – 6	South Johnstone
Mena Creek State School	P – 6	Mena Creek
Silkwood State School Playgroup	P – 6	Silkwood
St John's Catholic School	P - 6	Silkwood
El Arish State School	P-6	El Arish
Feluga State School Playgroup	P-6	Feluga
Mission Beach State School	P – 6	Mission Beach
The Rainforest School	P – 6	Mission Beach
Tully State School Instrumental music program	P – 6	Tully
St Clare's School Catholic School	P – 6	Tully
Lower Tully State School	P – 6	Tully Heads
Murray River Upper State School Part Time Kindy program	P – 6	Murray Upper
Kennedy Primary State School	P-6	Kennedy
Cardwell State School	P-6	Cardwell

Secondary Schools - North to South

Good Counsel College Catholic Secondary School	7 – 12	Innisfail
Innisfail State College	7-12	Innisfail
Radiant Life College	P – 9	Innisfail
Tully State High School	7-12	Tully

There are also a number of childcare centres in the region, including home day cares, Kindy's and afterschool and regular holiday care programs run by the libraries, Community Centres, and local organisations.

In 2024, the Cassowary Coast University Centre will be opening for multi-university and tertiary education collaboration facility. This provides a space to support all local students, from various backgrounds and abilities, and allow them the flexibility to stay in the local region, increasing liveability and employment in the region.



Image caption: Local Students at activity day

Aged Care Services

There are three aged care facilities in the Cassowary Coast Region

- Ozcare Warrina Home for the Aged – Innisfail
- Tully Nursing Home - Tully
- Rockingham – Cardwell

Centrelink and Services Australia Officer can be found on Charles Street, Innisfail. Centrelink Access Points can be found at Mission Beach Library, Cardwell Library and Tully Support Centre.

Additional aged care services within the community include:

St Johns Community Care

120 Rankin Street, Innisfail 07 4061 2819

Blue Care

91 Mourilyan Road, Innisfail 1300 971 043

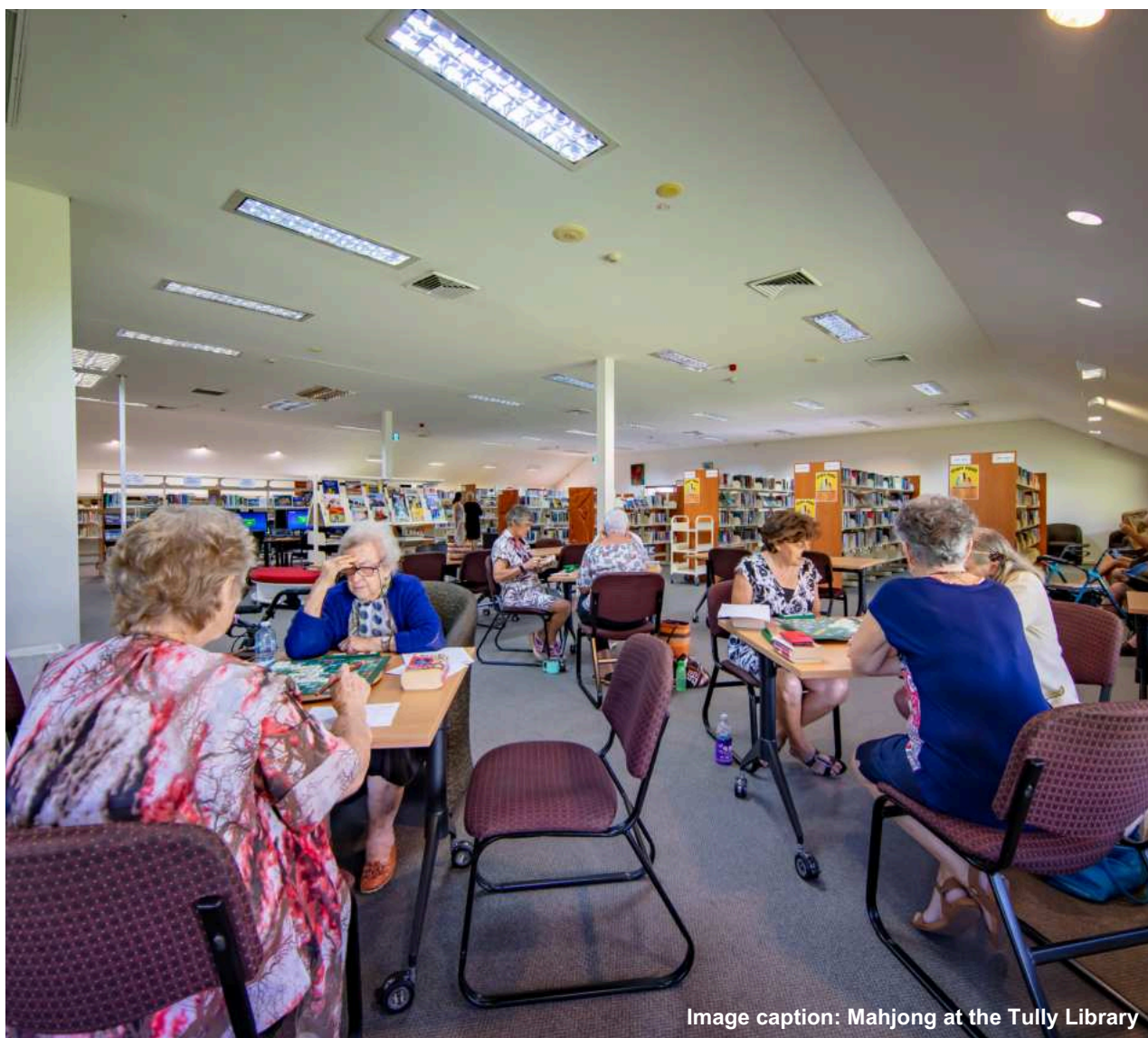


Image caption: Mahjong at the Tully Library

Events, Markets, and Cultural Activities

The Cassowary Coast region hosts community celebrations, unique events, and several significant major events. Whether they are sports, arts and culture, food and drink, music festivals or business events, they contribute to the diversity and fabric of our region, tell our story, and provide new opportunities.

If you are looking for information on local events and markets or are involved in organising an event you can find more information on Council's website page [here](#).

Cassowary Coast Tourism feature a calendar of events across the region which features on their website [here](#).

With our region's diverse range of locally grown produce, multiculturalism and networks of artists, community markets are a way of life on the Cassowary Coast. Markets can be found regularly at communities including Innisfail, Tully, Mission Beach, Cardwell, Kurrimine Beach and El Arish and are often aligned with a special event or occasion such as Easter or Mother's Day.

For a list of current activities and events, head over to the Cassowary Coast Tourism site for their interactive events Calendar.

CASSOWARY COAST EVENTS

cassowarycoasttourism.com.au

JAN  Australia Day Pool Party	FEB  Chinese New Year at Innisfail Temple	MAR  Fruit of the Series	APR  Cardwell Easter Markets
MAY  Feast of the Three Saints Battle of the Coral Sea Commemoration Mother's Day Market	JUN  Cardwell Market Volksfest	JUL  Tully TA Boogie Beachruns @ Mission Beach Innisfail Show Day Tully Show Day	AUG  Mission Beach Outdoor Film Festival Australian UFO Festival Innisfail Autofest Innisfail Game Fishing Competition Redbull Defence Australia Innisfail Banana Races
SEP  Tropical Art Deco Festival Kurrimine Classic Fishing Competition One Mission Multiport Adventure Cardwell Market - Classic British Car Expo Taipa Tournament Vaka Tui Moku Outrigger Regatta Cay Boogie	OCT  Cardwell Annual Barro Bonanza Cardwell Seafest Innisfail Annual Races Innisfail Riverfest Mission Beach Sailing Regatta	NOV  Mission Arts Exhibition Tully Bull and Bike Ride	DEC  Mission Arts Exhibition Christmas Street Parties

Markets

- Innisfail Markets - 3rd Saturday (Feb to Dec)
- Kurrimine Markets - 2nd Saturday (April to Sep)
- Cardwell Jetty Markets - 2nd Sun (April to Sep)
- Tully Markets - 2nd & 4th Sat (All year round)
- Mission Beach Markets - 1st & 3rd Sunday
- Mission Beach Monster Markets - Last Sunday (April to Nov)

Information Centres

Tully Visitor and Heritage Centre

Bruce Highway Tully

Open 7 days a week

M-F 09.00 am – 4.30 pm

Saturday 9.00 am – 1.00 pm

Sunday 10.00 am – 1.00pm

Innisfail Shire Hall – Rankin Street Innisfail

M T Th F 08.30 am – 4.30 pm

W 9.30 am – 4.30 pm

Cardwell Museum and Heritage Precinct

Monday to Thursday 9.00 am – 4.30 pm and Saturday 9.00 am – 12.00 pm

Mission Beach Wet Tropics Information Centre

Porters Promenade Mission Beach

Monday to Saturday 9.00 am – 4.30 pm

Sunday 10.00 am – 2.00 pm



Image caption: Cardwell Museum and Heritage Precinct

Sports and Recreation

A great way to enjoy the Wet Tropics is with a stroll or cycle through the rainforest and along the beaches of the Cassowary Coast. Walking and cycling trails, managed by Cassowary Coast Regional Council and National Parks take you through rare, endangered coastal rainforest, wetland, mangroves and along pristine beaches. Some easy and moderate walks in the region include:

Name of Walk	Location
Ulysses Link Walking Track	Mission Beach
Cutten Brothers Walking Track	Mission Beach
Edmund Kennedy Walking Track	South Mission Beach
Cardwell Foreshore Trail	Cardwell
Tully Heritage Trail	Tully
Innisfail Riverside Shared Walkway	Innisfail (along scenic Johnstone River)
Warrina Lakes Botanical Garden Circuit	Innisfail
Innisfail Art Deco Town Walk	Innisfail
Misty Mountain Wilderness Walks	Across the region
Mt Tyson Walk	Tully
Bicton Hill Circuit	Clump Mountain National Park
Musgravea Track	Djiru National Park (also available for mountain biking)
Thorsborne Trail	Hinchinbrook Island
Murray Falls Walk	Kennedy
Henrietta Creek and Crawfords Lookout Area	East Palmerston



Image caption: Views of Tully from Mount Tyson

Sporting Clubs and Groups

For those that enjoy outdoor sports, there is a wide range of sporting grounds and facilities in the Cassowary Coast, and a multitude of sporting clubs that use those grounds.

Some long standing clubs in the region are – Brothers Innisfail Rugby League, Tully Tigers Rugby League; Innisfail, Tully, Mission beach tennis clubs, Pickleball, Innisfail and Tully Netball, Cricket, Soccer, rugby union, bike riders, dragon boats and running clubs and many more. Meeting times and membership conditions can usually be found online, or on Social Media.

Sporting Clubs and Groups - North to South

Tait Family Martial Arts	Mission Beach Swimming Club
Innisfail & District Tennis Club	Mission Beach Tennis Club
Innisfail Combined Sports Assn	Mission Beach Sailing Club
Innisfail – Sporting Shooters Assn	Mission Beach Outrigger Canoe Club
Innisfail Golf Club & Junior Gold Club	Mission Beach Surf Life Saving Club
Innisfail & District Netball Assn	Cassowary Coast Multisport Club
Coconuts Outrigger Canoe Club	Mission Beach Cricket Club Inc
Cassowary Coast Little Athletics	Mission Beach Football Club
Innisfail BUG Inc - Biking	Mission Beach Gymnastics Club
Innisfail Horse and Pony Club	Tully Touch Football Club
Innisfail Pistol Club	Tully Western Performance & Cutting Club
Innisfail Rowing Club	Tully Mission Beach Pickleball
Innisfail & District Ballet & Dance Society	Tully County Club Ltd
Innisfail Touch Assn	Tully Bowls Club
Innisfail Turf Club	Tully Basketball Inc
Innisfail Swimming	Tully Crickets Assn
Innisfail United Football Club	Tully Tennis & Social Club Inc
Johnstone River Football Club	Far North Free fall
Innisfail Bowls Club	Tully Swimming Club Inc
Brothers Rugby League & Junior Rugby League	Australian Rafting Federation
Innisfail Tigers Junior Soccer Club	Tully Netball Assn Inc
Cassowary Coast Junior Rugby Union	Tully Junior Football Club Inc – Tully Flames Soccer
Boogan Stars Junior Football Club	Tully Little Athletics
Etty Bay Surf Lifesaving Club	Tully Gym and Tramp Club Inc
Wangan Sports Club Inc	Tully & District Pony Club
South Johnstone Bowls Club	Hinchenbrook Branch Australia Stock Horse Association
Silkwood Bowls Club	Cardwell Country Club
Silkwood Junior Football Club Inc	Cardwell Bowls Club
Silkwood Clay Target Club	Cardwell & District Little Athletics
El Arish Community Sports and Recreation Centre Inc	Kurrimine Beach & District Pony and Horse Sports Assn Inc
El Arish Country Club	Cardwell Outrigger Canoe Club
Kurrimine Crocs Cricket Club	Cheer IN Cardwell - Cheerleading
Kurramine Beach Bowhunters Club	Cardwell Golf Club Inc
Kurrimine Beach Rifle (Pistol) Club	Cardwell Swim Club

Recreational Clubs and Groups - North to South

QCWA – East Palmerston, Flying Fish Point, Silkwood, Tully	Mission Beach Fishing Club
National Servicemen’s Association (Innisfail / Tully / Babinda)	Mission Beach Game Fishing Club
Innisfail Scouts	Tully Motorcycle Club
Kattar Singh Srabah Youth Sports & Welfare Club Incorporated	Tully District Darts Club
Innisfail / Tully Racing Pidgeons	Tully – Mission Beach Girl Guides
Innisfail Woodworkers Guild	Tully Bridge Club
Cowley Beach Fishing and Community Club	Tully & District Sportfishing Club
Kurrimine Recreation and Progress Sporting Assn	Tully Men’s Shed
Kurramine Beach Fishing Club	Tully Girl Guides
Mission Beach Aquatic Recreation Club	Tully Gem Club
Mission Beach Mai Tai	Tully & District Kennel Club
Mission Beach Scout Group	Tully Bowhunters Club
Mission Beach Beef & Burgundy Club	North Queensland Quarter horse Association
Mission Beach Pentaque Club	Gumboot Theatre
Mission Beach Lions Club	Cardwell Sport Fishing Club



Image caption: The Hull River

Pools, Parks and Gardens

There are four public swimming complexes in the Cassowary Coast Region.

Innisfail Pool (Memorial Baths) – McGowan Drive, Innisfail

07 4061 1267

Tully Pool – McQuillen Street, Tully

07 4068 1445

Cardwell Pool – Victoria Street, Cardwell

07 4066 2412

Mission Beach Aquatic Centre – Cnr Tully Mission Beach Road and El Arish Mission Beach Road, Mission Beach

07 4068 7256

Opening hours, facilities and entry fees vary at each location. Please contact your nearest pool for more details.

Fun in the Sun

Mission Beach Splash Pad

Rotary Park Reid Road Wongaling Beach

No Entry Fee, open 8.00am – 8.00pm, run by Cassowary Coast Regional Council

Pump Tracks

Cassowary Coast Regional Council has two pump track facilities in the region. Located at Brasenose Street, Cardwell and the Warrina Lakes Parklands, these are free to use for all levels of abilities and experiences. The pump tracks are available at the times the parks are open. Adult supervision is required at all Council facilities and parks.

Parks

Children's playgrounds, open spaces and parks are located throughout the region. Council have a cyclical schedule for upgrades and beautification, but if there are any hazards found, please contact Council as a priority.

Libraries and Museums

Phone: 1300 366 616

Email: library@ccrc.qld.gov.au

Website: cassowary.spydus.com

Innisfail – 49 Rankin Street, Innisfail

Tully – 34 Bryant Street, Tully

Mission Beach – 2018 Tully Mission Beach Drive, Wongaling Beach

Monday	10:00 AM to 5:00 PM
Tuesday	9:00 AM to 5:00 PM
Wednesday	9:00 AM to 5:00 PM
Thursday	9:00 AM to 5:00 PM
Friday	9:00 AM to 5:00 PM
Saturday	9:00 AM to 12:00 PM

Cardwell – 4 Balliol Street, Cardwell

Monday	10:00 AM to 5:00 PM
Tuesday	9:00 AM to 5:00 PM (CLOSED 1:00 PM – 2:00 PM)
Wednesday	9:00 AM to 5:00 PM
Thursday	9:00 AM to 5:00 PM
Friday	CLOSED
Saturday	9:00 AM to 12:00 PM

Cardwell Historical Precinct – 53 Victoria Street, Cardwell

Bush Telegraph and Court House Self Guided

Monday to Thursday 9am to 4:30pm

Saturday 9am to 12noon

J C Hubinger Museum Staffed Hours

Monday to Thursday 9:30am to 12:00pm | 1:00pm to 3:30pm

Free admission (donations welcome)

Group/school visits are encouraged, with guided or self-guided tours available.

Parking is available in Balliol Street (room for coaches) and the premises has wheelchair access.

All libraries have activities for all ages such as school holiday fun, First Five Forever, Games and Puzzles, Movies, Mahjong, scrabble and book clubs.

Membership at the libraries includes access to books from all four libraries, and online membership to digital services such as audiobooks and streaming services. We encourage new and current community members to pop into a library and have a chat with the friendly team to find out how you can join the library and access all the services and programs.

Council Services and Information

Rates notices are issued six monthly, at the end of January, due at the end of February, and again in early August, due early September. You have 30 days to pay the balance in full and when paid by the due date, a discount is allocated. Ratepayers have the option to make pre-payments in advance to their rate files if they wish. This can reduce the financial pressure of having to pay a lump sum when the rates notice is issued.

Should you need to update your postal address for service of Rate Notices, requests must be made in writing to Council, either by post or email.

If you wish to sign up to have your rate notice emailed and have only recently purchased the property, visit cassowarycoast.ezybill.com.au and sign up for the EzyBill account.

Projects

Community members can engage with council through our engagement platform at ccrc.qld.gov.au/yoursay. Our YourSay page provides you with updates about major projects and initiatives and the opportunity to have your say when we seek to engage with community.

Roads

We have 1,220 km council-controlled roads, including 514 km of unsealed roads, 169 bridges, footpaths, drains and 139 major road culverts. We conduct regular routine inspections and investigate issues reported by the community. Our regular road maintenance includes street sweeping, sealed and unsealed road repairs, roadside slashing and spraying, maintenance of kerbs culverts, pipes, and drains. You can check for any updates on unsealed roads through the unsealed road report on the Council website [here](#).

Business

If you are looking to start a new business, buy a business or want to expand your business, contact council to discuss your plans to ensure they meet with regulations and compliance. Council's economic development team are on hand to assist with support and knowledge around new and expanding businesses.



Image caption: The Pocket

Building, Planning and Renovating

What is a development?

- Carrying out building
- Carrying out plumbing and drainage work
- Carrying out operation work
- Reconfiguring a lot
- Demolishing existing structures
- Adding garages, carports, swimming pools and awnings
- Making a material change of use of premises
- Adding granny flats or additional buildings on a property

If you are undertaking development, you may need a development permit from Council. Council officers can provide you with advice as to whether a permit is required.

Council's strategic planning section undertakes future land-use planning for the region through the development of strategic planning documents and policies, this section is also responsible for incorporating sustainability principles in strategic land use planning activities and internally throughout Councils operations.

Regional plans provide a spatial representation of how a region, encompassing multiple local government areas, will grow and respond to change over the long term (20-25 years). They are statutory instruments under Queensland's Planning Act (2016) and must be followed by local governments when they prepare their local land use planning schemes.

The Far North Queensland Regional Plan is currently being reviewed. The review will provide a 25-year framework to guide growth, support future jobs, and assist in Queensland's decarbonisation journey.

View the State Development Far North Queensland Regional Plan [here](#) or for more help with your major projects, contact Council for more information.

Water

Despite abundant rainfall, water conservation is crucial in the Cassowary Coast region. Residents must be mindful of usage, with water charges in rates notices serving as reminders. Through water-saving practices, residents preserve this vital resource. During times of water restrictions or water works advisories, stay informed via social media or Council's website for community safety.



Image caption: Innisfail, featuring the water tower

Waste

Council promotes waste minimisation and encourages residents to:

- Reduce consumption – buy recycled products
- Re-use goods – hand on items you no longer need
- Recycle – place newspapers plastic and rinsed jars and bottles in your dry waste

A standard residential kerbside collection service is made up of a 140/120L wet waste bin collected weekly and a 240L dry waste bin collected fortnightly. Visit the [Domestic Waste Collection Services page](#) to find out which weeks you will need to put your bins out.

Waste Transfer Stations

Stoters Hill – Quarry Road Stoters Hill, Off Palmerston Highway, Innisfail

Tully – 374 Tully Gorge Road, Tully

Bells Creek – Off Bruce Highway, Bells Creek

Mission Beach – Wheatley Road, Wongaling Beach

Cardwell – Lawson Drive, Cardwell

Murray Upper – Middle Murray Road, Murray Upper

Hull Heads – Hull Heads Road, Hull Heads

Any updates regarding opening hours or closures can be found on the [Cassowary Coast Regional Council Facebook Page](#).

There are two Container Refund Scheme drop off points in the Cassowary Coast which are run by MAMS Group:

- MAMS Group Depot Innisfail - 7 Dickson Rd, Innisfail
- MAMS Group Depot Tully - 575 Andersen St, Tully

Facilities for Hire

Council have a range of facilities available for regular or casual hire. From conference rooms to study nooks, halls and meeting rooms. Contact Council to find out more and book a facility.

- Innisfail Shire Hall
- Innisfail Showground
- Tully Showground and Grandstand
- The 'Con' Theatre – Innisfail
- Cardwell Hall
- Disaster Management and Public Education and Training Centre
- The Igloo – Tully
- Warrina Lakes – Innisfail
- Library Meeting Rooms – across the region



Image caption: Tully Grand Stand

Responsible Pet Ownership

All dogs must be registered within the Cassowary Coast Regional Council once they reach 12 weeks of age and/or within 14 days of new ownership. Access more [information on registering your dog](#).

There are seven off leash parks in the Cassowary Coast Regional Council area:

- Boustead Park – Kurrimine Beach
- Wildsoet Park – Tully
- Coral Sea Paek – Cardwell
- Mission Beach Foreshore
- South Mission Beach- Foreshore
- Wrights Park – Innisfail
- Banfield Parade – Mission Beach

A responsible dog or cat owner is one who:

- provides adequate food, water, shelter, stimulus and living space for their pet.
- regularly exercises their dog.
- gets their dog or cat desexed.
- vaccinates and worms their pet.
- registers their dog with Council annually and ensures their dog wears its identification tag.
- ensures their dog and cat are microchipped.
- picks up after their pet.
- provides adequate fencing to contain their dog on their property.
- ensures their dog does not cause a nuisance to neighbours or other community members.

Download Cassowary Coast Regional Council's FREE [Good Dog Owners Guide](#) for more tips and tricks on how to be a good dog owner.



Image caption: Local Councillor Jeff Baines with CCRC Local Laws Officer

Disaster Information

To obtain information in relation to disasters, including Councils Disaster Management Plan, your cyclone guide, floods, storms and emergency contact, please see our **Disaster Dashboard** on the Council Website.

The Cassowary Coast region is a beautiful place to live. However, like many other regions, there are potential natural hazards.

In our case, these are most likely to be wet season cyclones and floods.

The importance of being prepared cannot be emphasised enough. Emergency services and others with a role in disaster management do everything they can to help before, during and after an event, but resources are not infinite.

Every one has a responsibility to take charge of their own safety by heeding the warnings, taking the necessary precautions and being prepared. There are many things to consider, including:

- Having household and business emergency kits with supplies to last at least five days, such as a first aid kit, battery operated radio, spare batteries, tinned food, water, torches, clothing, cooking gear and medications.
- Planning where you would shelter in your home and where you would evacuate to, if needed.
- Planning for your pets, having your house and yard, cyclone and flood ready, well before cyclone season (November to March).

Visit the Council's website for detailed up to date disaster information and for preparing for a cyclone or disaster, see the Queensland Government's website – **[getready.qld.gov.au](https://www.getready.qld.gov.au)**



Image caption: Flooding in Innisfail in early 2024

Unique Natural Environment

The Cassowary Coast Region is one of the most bio-diverse in Australia, with a wealth of natural assets and with iconic flora and fauna such as the Southern Cassowary, Mahogany Glider, and Australia's largest variety of frogs.

World Heritage rainforest is a feature in protected areas that make up approximately 70 per cent of the Cassowary Coast Region. This region is also bordered by the Great Barrier Reef Marine Park.

Our community values the unique natural environment and programs are in place to protect endangered species and their habitats to manage natural areas and create wildlife corridors, private landholders contributions to habitat protection and management are also valued.

Cassowary Coast Regional Council has a Sustainability policy, as well as a Southern Cassowary Conservation Policy.

We are also very close to becoming an ECO Certification destination, in partnership with Cassowary Coast Tourism and key local, state and national stakeholders. Destination certification is about much more than the tourism sector: it's about real, tangible environmental sustainability being demonstrated by how the community as a whole operates.

Increasingly, visitors are demanding authentic, unique, and environmentally sustainable experiences. A core belief is that visitors experiencing certified ECO Destinations do notice the difference.

The certification process considers six main themes which need to be actioned and audited before certification is granted.

- Destination Management
- Nature and Scenery
- Environment and Climate
- Culture and Tradition
- Social and Well-being
- Business and Hospitality

Our focus is together we can grow a strong, sustainable and resilient economy that positions our region for a prosperous future.

Natural Hazards

Estuarine (saltwater) crocodiles are an important part of north Queensland's wetlands, freshwater and marine environments. As a native species and a large predator, they help maintain overall ecosystem health and balance. Crocodiles are potentially dangerous; they are most active at night and during the annual breeding season (September to April). Obey crocodile warning signs and never take unnecessary risks in crocodile habitat. Never swim in water where crocodiles may live, even if there is no warning sign present.

Take care when fishing and camping; don't leave food scraps on boat ramps or at campsites. Residents can report sightings of crocodiles in urban areas to the Queensland Government on **1300 130 372**.

Both ETTY Bay and Mission Beach are popular destinations for witnessing the majestic and elusive cassowaries in their natural habitat. However, it's important for visitors to exercise caution and refrain from approaching or feeding these birds in public areas, including beaches. Cassowaries, known for their territorial behaviour and powerful kicks, pose significant dangers when encountered, potentially leading to aggressive interactions and injuries.

Feeding cassowaries can also disrupt their natural behaviours and increase the risk of negative encounters. Therefore, while enjoying the beauty of these coastal spots and the opportunity to observe cassowaries, it's essential to prioritise safety and respect for these magnificent but wild creatures.



Image caption: Cassowary at ETTY Bay

Our region has some of the most beautiful beaches in North Queensland.

Marine stingers live in Queensland's tropical waters, and are of particular concern between November and June (stinger season). The most dangerous species are the Box jellyfish (*Chironex fleckeri*) and the Irukandji. Box jellyfish stings can be fatal, and hospitalisation may result from the painful Irukandji sting. To help you enjoy your visit and stay safe, Council has installed stinger nets at the following beaches to help protect from the larger Box Jellyfish.

- Etty Bay
- Kurramine Beach
- Mission Beach
- South Mission Beach

Please note, that the Irukandji is very small, and the nets offer a small amount of resistance to this species.

Beach swimmers should take precautions:

- Swim at beaches patrolled by lifeguards.
- Look for and observe warning signs. Don't swim when beaches are closed.
- To avoid jellyfish stings, check the beach status with the beach lifeguard.
- Wear a stinger suit during stinger season (especially important for children)



Surf Life Saving North Queensland has active clubs at Mission Beach and Etty Bay, offering lifeguard services most weekends. These clubs also have sign on days for memberships within the local community and this is a great way to support your local community by all the family becoming involved.

It can take as little as six minutes of sun exposure to cause skin damage in the tropics. Skin cancer, unlike many cancers, is largely preventable. Protect yourself and reduce your risk. Wear sunscreen, protective clothing, a broadbrimmed hat and sunglasses. When outdoors for work or play, try to hold your activities in the shade or take portable shade (eg shade tent, canopy or umbrella)



On the Cassowary Coast

BE CASS-O-WARY

To report incidents and injuries call the DES Hotline on

1300 130 372

Community

Community Grants and Financial or In-kind Support

Council offers a range of grants throughout the year. Please refer to our **Community Grants and Funding Page** on the Council's website for further information about opening and closing dates and eligibility.

Community Grants are available annually and cover the following project streams –

- Sports Bursary
- Mayor's Emergent Funds
- Community Wellness, Economic Development, Environmental Sustainability
- Community Infrastructure Support

Letters of Support are often required for external grants or project backing. You can find a link to request the Letter of Support under the Grants section of the Council Web page.

Volunteering

Cassowary Coast has a very strong volunteering community, with several branches of the following groups just as a starter for how you can get involved with your community:

- Rotary – Innisfail
- Country Women's Association – East Palmerston, Flying Fish Point, Tully and Silkwood
- Red Cross
- Hospital Foundations – Innisfail and Tully
- Volunteer Coast Guard
- RSL Sub Branches
- Lions and Lioness - Innisfail and Tully
- Historic Societies
- Art Societies and Groups
- Garden and Horticulture Groups
- Men's Shed
- Scouts
- Sporting clubs and groups and many more ...

There are also several exciting events across the Cassowary Coast which are solely run by volunteers. Check social media and websites for further information.

Multicultural, Multi-faith

The Cassowary Coast is home to many different cultures, languages and backgrounds. We recognise the First Nations custodians of the region, the Mamu, Djiru, Girramay, Gulngay, Warrgamay, Jirrbal and Bandjin Peoples; the celebration of their culture, heritage and past adversities.

The Cassowary Coast also has a varied and mixed assortment of international early residents who helped with agricultural, aquacultural and cultural formation of the region. This included European, Chinese, South Pacific and Irish settlers and merchants.

Remnants of these early inhabitants have resulted in various faith based buildings of note in the area:

- Chinese Temple – Innisfail
- Our Mother of Good Counsel Church – Innisfail
- Masonic Temple – Innisfail



Image caption: Naidoc Week Celebrations at Jumbun

Churches - North to South

Mother of Good Counsel 90 Rankin StInnisfail	Catholic Church
Innisfail Baptist Family CentreTierney StreetInnisfail Estate	Baptist
St Albans Anglican Church85 Rankin StreetInnisfail	Anglican
Innisfail Uniting ChurchScullen AvenueInnisfail	Uniting
Tabernacle Of Yeshua Assembly1 Riley StreetSouth Innisfail	Tabernacle of Yeshua Assembly
Kingdom Hall of Jehovah's Witnesses2-6 Lower Hickey StreetEast Innisfail	Jehovah's Witnesses
Dormition of Our Lady131 Ernest StreetInnisfail	Orthodox Church
Innisfail Christian Assembly20 The CorsolInnisfail	Christian
Empower Church InnisfailMourilyan RoadSouth Innisfail	Pentecostal Church
The Church of Jesus Christ of Latter-Day Saints2 Stitt StreetInnisfail	The Church of Jesus Christ of Latter-Day Saints
Innisfail Seventh Day Adventist Church114 Lawrence RoadInnisfail	Seventh Day Adventist Church
Church of Christ the King10 Mourilyan Harbour RoadMourilyan	Catholic
Church of St Rita5 Green StreetSouth Johnstone	Catholic
Church of St John the EvangelistHarold StreetSilkwood	Catholic
Our Lady of Fatima Church32 Glasgow StEl Arish	Catholic
Church of the Holdy SpiritWebb RoadWongaling Beach	Catholic
Mission Beach Family Church3B Stephens StreetMission Beach	Australian Christian Church
Cassowary Coast Uniting ChurchTully Mission Beach RoadMission Beach	Uniting Church
St Luke Lutheran Church Cassowary DriveMisson Beach	Lutheran
Ekalesia Mission Beach	Cook Islands Christian Church
St Clare of Montefalco Catholic Church13 Mars StreetTully	Catholic
Tully Family Church2 Watkins StreetTully	Australian Christian Church
St Johns Anglican Church2 Black StreetTully	Anglican
Tully Baptist Church6 Plumb StreetTully	Baptist
Tully Seventh Day Adventist1 Edward StreetTully	Seventh Day Adventist
Tully Uniting Church16a McQuillan StreetTully	Uniting Church
Kingdom Hall of Jehovah's Witnesses22 Brosnan StreetTully	Jehovah's Witnesses
Our Lady Star of the Sea Catholic Church121 Victoria StreetCardwell	Catholic

Stay Connected

Register to receive newsletters and be part of your community.

Innisfail	Shire Hall 70 Rankin Street Innisfail	Monday, Tuesday, Thursday, Friday 8:30am - 4:30pm Wednesday 9:30am - 4:30pm
Tully	Tully Civic Centre 38-40 Bryant Street Tully	Monday, Tuesday, Thursday, Friday 8:30am - 4:30pm Wednesday 9:30am - 4:30pm
Cardwell <i>(Limited services available)</i>	Cardwell Library 4 Balliol Street Cardwell	Monday 9:00am - 5:00pm Tuesday 9:00am to 1:00pm & 2:00pm to 5:00pm Wednesday, Thursday 9:00am to 5:00pm Friday CLOSED Saturday 9:00am to 12:00pm

Call

For all business hours and after hours service.

1300 763 903 (for the cost of a local phone call if you are using a landline)

Fax

07 4061 4258

Council's Website

www.cassowarycoast.qld.gov.au

Cassowary Coast Your Say Website

www.yoursay.cassowarycoast.qld.gov.au

Write

Please address all correspondence to: Chief Executive Officer

PO Box 887

Innisfail, QLD 4860

Email

enquiries@cassowarycoast.qld.gov.au

Sign up to E-News

Click [here](#) to sign up today!



Cassowary
Coast
REGIONAL
COUNCIL

-  1300 763 903
-  enquiries@cassowarycoast.qld.gov.au
-  cassowarycoast.qld.gov.au
-  70 Rankin Street, Innisfail
38-40 Bryant Street, Tully
4 Balliol Street, Cardwell